



ATLAS Sp. z o.o.
ul. Św. Teresy 105
91-222 Łódź



WROCŁAW PROCESSING PLANT
ul. Gazowa 3
50-513 Wrocław

tel. + 48 71 33 66 651
fax + 48 71 33 67 098

e-mail: fox_biuro@atlas.com.pl



www.fox-dekurator.pl

DECORATIVE effects



Fox Dekorator is a Polish brand of exclusive systems of wall decorations, which for almost two decades has been creating solutions for decorative plasters and paints. Our wide portfolio includes acrylic masses, mineral plasters, structural paints and glazes, decorative varnishes. Since 2013 the brand Fox Dekorator has been owned by Atlas Group – the leader of the Polish construction chemicals market.



Easy in use decorative paint forming the effect of shimmering diamond flecks upon the coated surface. Diamento Paint imparts nobility and beauty to the interiors. Rooms coated with Diamento Paint allow to transfer to the world of luxury for a while. Five specially selected colours allow for arrangement of almost any interior.

phases of the **EFFECT** application



phase I: Apply base coat paint of colour similar to the selected paint colour upon clean and dry surface.



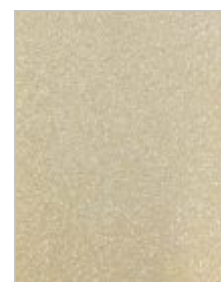
phase II: Apply the first coat of Diamento effect with a string roller when the base coat paint dries. Apply the paint with irregular crossing moves led in all directions.



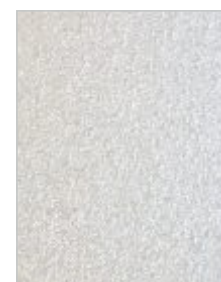
phase III: When the first coat dries, apply the second coat of Diamento effect similarly to the previous one.



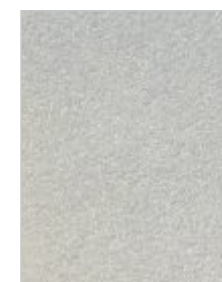
luna



terra



uran



venus



mars

other
COLOURS

ready-to-use colours – available in stock

products necessary for the effect application and their average consumption:



DIAMENTO
approx. 0,1 l/m²
per coat



Easy in use decorative paint forming the effect of windblown desert sand upon the coated surface. Walls decorated with Kalahari Paint impart noble feature of African landscapes and transfer to the world of exotic voyages. Five specially selected colours allow for arrangement of almost any interior.

phases of the **EFFECT** application



phase I: Apply base coat paint of colour similar to the selected paint colour upon clean and dry surface.



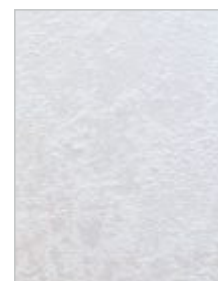
phase II: Apply the coat of Kalahari effect with a paintbrush when the base coat paint dries.



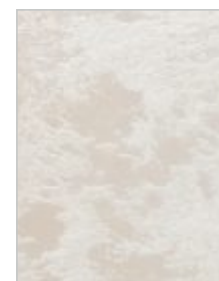
phase III: Shape the surface after approx. 2 minutes since coating.



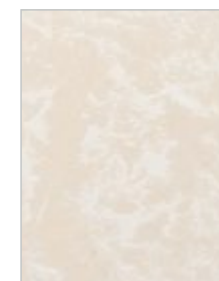
sol



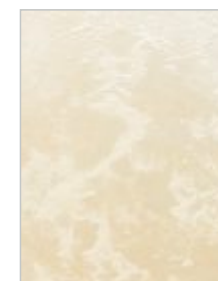
lapis



sabulum



vesper



nebula

other
COLOURS

ready-to-use colours – available in stock

products necessary for the effect application and their average consumption:



KALAHARI
approx. 0,1 l/m²



Sandstorm Effect allows to form mixed spatial texture of windblown sand flecks. The effect is formed with a mix of Pearl Patina with metallic pigments and ZEN Paint with sand flecks.

phases of the **EFFECT** application



phase I: Apply Zen Paint upon white surface, form the pattern.



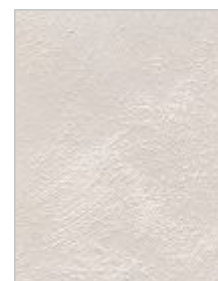
phase II: When Zen Paint dries, coat the decoration with coloured Pearl Patina with a string roller. Patina is applied with irregular crossing moves led in all directions.



phase III: When the first coat dries, apply the second coat of Pearl Patina if needed.



Cassel soil



coconut cream



sunny glow



misty daybreak



graphite greyness

other
COLOURS

colouring: 1 tube of Pigment Concentrate 40 ml/ 1 l of Pearl Patina

products necessary for the effect application and their average consumption:



ZEN PAINT

approx. 0,16 l/m²



PEARL PATINA

approx. 0,14 l/m²

colouring

+



PIGMENT
CONCENTRATE 40 ml
Cassel Soil
1 pc/1 l of Pearl Patina

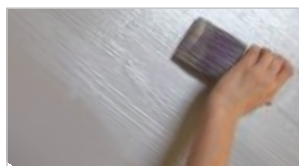


Silk Road Effect is the effect of silky – pearl surface of mixed texture, which changes depending on the light angle and intensity. The effect is formed with Pearl Patina 3D – decorative paint containing metallic pigments and sand flecks.

phases of the **EFFECT** application



phase I: Apply base coat paint upon clean and dry surface; its colour should be white or similar to the selected effect colour.



phase II: Apply coloured Pearl Patina with a paintbrush when the base coat paint dries.



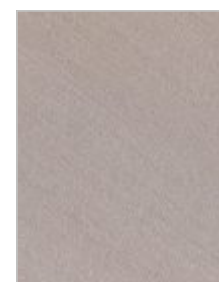
phase III: Shape the surface after approx. 2 minutes since Patina application. In order to intensify the effect the texture can be brushed with a brush trowel.



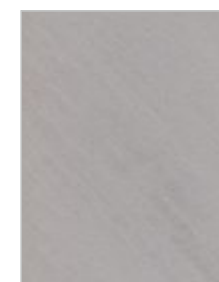
Cassel soil



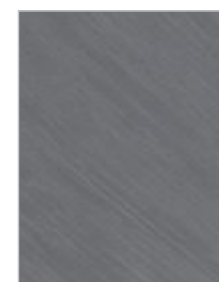
coconut cream



caramel tinge



lime rock



graphite greyiness

other
COLOURS

colouring: 1 tube of Pigment Concentrate 40 ml/ 1 l of Pearl Patina

products necessary for the effect application and their average consumption:



INITIUM PAINT

approx. 0,1 l/m²



PEARL PATINA 3D

approx. 0,14 l/m²

PIGMENT
CONCENTRATE 40 ml
Cassel Soil
1 pc/1 l of Pearl Patina



Rust Effect forms slightly coarse, flickering surface with trails, stains or patches imitating rusty metal sheet.

phases of the **EFFECT** application



phase I: We recommend to paint the wall with colour similar to the selected decoration colour or to apply the base coat with Product 1.



phase II: Apply Product 1 with a sponge. Apply Product 2 in some points.



phase III: Complete the spaces with two colours until the expected effect is formed.



products necessary for the effect application and their average consumption:



RUST effect

set for 10 m²



The set includes:

- product 1
- product 2
- sponge 2 pcs
- masking tape
- masking foil

CHECK the instructional movie on www.fox-dekurator.pl/filmy



Brushed Aluminum Effect distinguishes itself with metallic gloss and trails imitating aluminum sheet. Easy in use, imparts modern appearance and underlines industrial character of a room.

phases of the **EFFECT** application



phase I: Apply base coat paint of colour similar to the selected effect colour upon clean and dry surface. Next, apply Product 1 with a paintbrush, try to leave visible trails.



phase II: Apply Product 2 in some points upon still wet decoration.



phase III: Rub both colours together until slight colour interfusion forms. Complete with the selected colour.



products necessary for the effect application and their average consumption:



BRUSHED
ALUMINUM effect
set for 10 m²



The set includes:

- product 1
- product 2
- flat paintbrush 2 pcs
- masking tape
- masking foil

CHECK the instructional movie on www.fox-dekurator.pl/filmy



Moon Rock Effect is an easy-to-form, but still grand wall decoration. It mixes practical characteristics of Sandstone and decorative ones of Pearl Patina.

phases of the **EFFECT** application



phase I: Prime the surface with Bonding Primer.



phase II: Apply Sandstone and form the texture with a sponge roller.



phase III: Smooth the drying material with a trowel edge.



phase IV: Slightly grind with sandpaper and coat with Decorative Varnish.



phase V: Apply coloured Pearl Patina with a paintbrush. Patina should be applied with irregular crossing moves led in all directions.



phase VI: Collect excessive material with a wall scraper.

CHECK the instructional movie on www.fox-dekurator.pl/filmy



caramel tinge



lime rock



ashy brown



menthol green



concrete loft

other
COLOURS

colouring: 1 tube of Pigment Concentrate 40 ml/ 1 l of Pearl Patina

products necessary for the effect application and their average consumption:



BONDING
PRIMER

approx. 0,14 kg/m²



SANDSTONE

approx. 1,5 kg/m²



DECORATIVE
VARNISH

approx. 0,14 l/m²



PEARL
PATINA

approx. 0,25 l/m²

PIGMENT
CONCENTRATE 40 ml
Caramel Tinge
1 pc/1 l of Pearl Patina



Trilobite Effect is a quick, very grand and original idea of wall arrangement. It allows to form characteristic effect of skin with numerous surface veins with metallic gloss.

phases of the **EFFECT** application



phase I: Prime the surface with Bonding Primer.



phase II: Apply approx. 2 mm thick coat of Relief with a venetian plastering trowel.



phase III: Apply strips of stretch foil upon wet material and slightly form the pattern with a hand.



phase IV: Tear the foil off with a quick move.



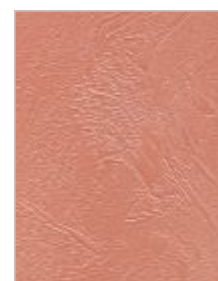
phase V: Apply coloured Pearl Patina with a roller upon the dry surface.



***optionally** phase VI: When Pearl Patina dries, the surface can be coated with Decorative Varnish with addition of Brocade.



coconut cream



orange aurora



chocolate bar



Amazon breeze



blue lagoon

other
COLOURS

colouring: 1 tube of Pigment Concentrate 40 ml/ 1 l of Pearl Patina

products necessary for the effect application and their average consumption:

 BONDING PRIMER approx. 0,14 kg/m ²	 RELIEF approx. 0,75 kg/m ²	<div style="border: 1px solid black; padding: 5px; display: inline-block;">  +  </div> PEARL PATINA approx. 0,05 l/m ²	<div style="border: 1px solid black; padding: 5px; display: inline-block;">  +  </div> DECORATIVE VARNISH approx. 0,03 l/m ²
		<div style="border: 1px solid black; padding: 5px; display: inline-block;"> PIGMENT CONCENTRATE 40 ml Coconut Cream 1 pc/1 l of Pearl Patina </div>	<p>* optionally</p> <div style="border: 1px solid black; padding: 5px; display: inline-block;"> DECORATIVE VARNISH approx. 0,03 l/m² </div> <div style="border: 1px solid black; padding: 5px; display: inline-block;"> BROCADE 1 pc/ 1 l of Decorative Varnish </div>



Hurricane Effect gets the most out of semi-transparent mass, which allows to form coatings with interfusing colours and brings possibility of creation of outstanding decorative patterns.

phases of the **EFFECT** application



phase I: Prime the surface with Bonding Primer.



phase II: Apply approx. 2 mm thick coat of dark coloured Relief with a venetian plastering trowel.



phase III: Form the pattern with a trowel applied flat upon the surface and dragged in various directions.



phase IV: Slightly grind with sand paper in order to remove any sharp decoration elements.



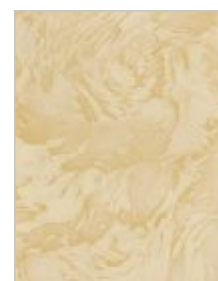
phase V: Apply light coloured Relief to fill gaps in the texture, smooth the surface.



phase VI: Coat the surface with Decorative Varnish.



milky cocoa



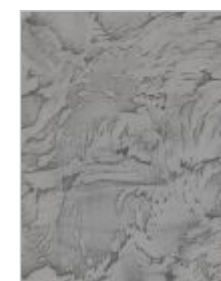
sunny glow



lime rock



raspberry sorbet



graphite greyness

other
COLOURS

colouring: dark colour - 1 tube of Pigment Concentrate 40 ml/ 4 kg of Relief
light colour - 1 tube of Pigment 20 ml/ 4 kg of Relief

products necessary for the effect application and their average consumption:



BONDING PRIMER

approx. 0,14 kg/m²



RELIEF

approx. 1 kg/m²



PIGMENT CONCENTRATE 40 ml
Milky Cocoa

1 pc/ 4 kg of Relief



RELIEF

approx. 0,5 kg/m²



PIGMENT 20 ml
Milky Cocoa

1 pc/ 4 kg of Relief



DECORATIVE VARNISH

approx. 0,03 l/m²



Lime Travertine is a natural lime plaster imitating real stone. Allows to form decorative coatings of elaborate textures. By mixing timeless values, it gives extraordinary appearance to a room.

phases of the **EFFECT** application



phase I: Apply Lime Travertine upon the primed surface, keep coat thickness same as the grain size.



phase II: Slightly moist the surface with water before application of the second coat. Apply the second coat of Travertine.



phase III: Scratch scores and smooth the surface when the material keeps drying.



phase IV: Coat the surface with Decorative Varnish.



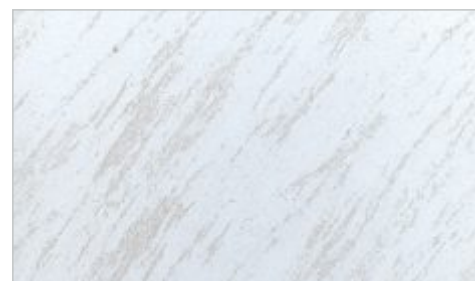
phase V: Apply Varnish coloured with Pigment.



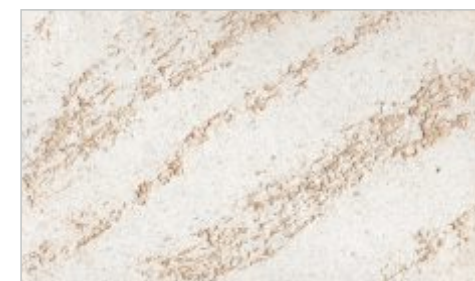
phase VI: Wash excessive material with a sponge, rinse the sponge with water frequently.



travertine: fine



travertine: super fine



travertine: coarse

GRAIN SIZE

colouring: 1 tube of Pigment 20 ml/ 1 l of Decorative Varnish

products necessary for the effect application and their average consumption:



BONDING PRIMER

approx. 0,14 kg/m²



LIME TRAVERTINE

super fine - approx. 0.8 kg/m²
fine - approx. 1.4 kg/m²
coarse - approx. 2.8 kg/m²



DECORATIVE VARNISH

approx. 0,07 l/m²



DECORATIVE VARNISH

approx. 0,04 l/m²

PIGMENT 20 ml
Chocolate Bar
1 pc/ 1 l of
Decorative Varnish

CHECK the instructional movie on www.fox-dekurator.pl/filmy



TERRA ANTICA effect

description and application manual



Terra Antica Effect is a noble natural lime coating. Decorated wall is marked by gentle surface coming back to cut polished stone with glistening mica lamellas, which underlines decorative advantages additionally.

phases of the EFFECT application



phase I: Apply coloured Travertine with addition of Mica upon the primed surface with a trowel, smooth the surface.



phase II: Slightly moist the surface with water before application of the second coat. Apply the second coat of Travertine. Smooth the surface when the material keeps drying.



phase III: Coat the surface with Decorative Varnish.

products necessary for the effect application and their average consumption:



SNOWFLAKES effect

description and application manual



Snowflakes Effect is an extremely grand wall coating giving outstanding character to a room. The uniqueness of this effect results from smart metallic mica flakes.

phases of the EFFECT application



phase I: Apply coloured Concrete Paint upon the primed surface.

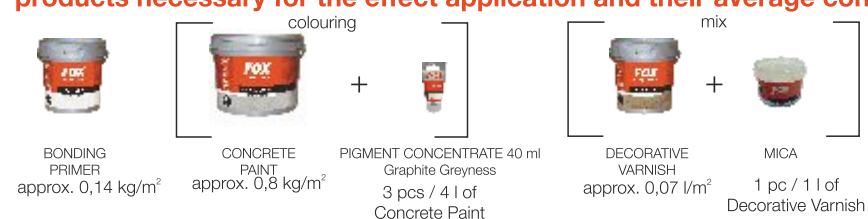


phase II: Apply the second coat when the first one dries. Smooth with a trowel edge.



phase III: Protect the whole surface with Decorative Varnish with addition of Mica.

products necessary for the effect application and their average consumption:





Concrete is a quintessence of simplicity, modernity and design. Trendy, artistic plaster forming perfect decoration of up-to-date residential and public access interiors. Superbly blends in with metal, glass and rough timber.

phases of the **EFFECT** application



phase I: Apply Concrete upon the primed surface with a venetian plastering trowel.



phase II: Apply tape imitating rustications when the Concrete surface dries.



phase III: Moist the surface with water before application of the second Concrete coat, apply the material then.



phase IV: When the material keeps drying, smooth the surface with a trowel edge until the expected level of smoothness is reached.



phase V: Remove previously applied tape as soon as the surface keeps moist.



phase VI: Thoroughly coat the surface with Decorative Varnish.

CHECK the instructional movie on www.fox-dekurator.pl/filmy



basic colour (similar to natural one)



natural linen



menthol green



Breton blue



graphite greyness

other
COLOURS

colouring: 1 tube of Pigment Concentrate 40 ml/ 5 kg of Concrete

products necessary for the effect application and their average consumption:



BONDING
PRIMER

approx. 0,14 kg/m²



CONCRETE

approx. 2,0 kg/m²



DECORATIVE
VARNISH

approx. 0,08 l/m²



THIN TAPE
for rustications forming



Classic Stucco is an exclusive coating which allows to form perfectly smooth, greatly glistening and deep surfaces characteristic for antique techniques of decoration.

phases of the **EFFECT** application



phase I: Prime the surface with Bonding Primer.



phase II: Apply the first thin coat of Classic Stucco, form the pattern simultaneously.



phase III: Apply the second coat of Stucco.



phase IV: Apply the third coat of Stucco, smooth the surface as much as possible.



phase V: Polish the decoration with a trowel edge.

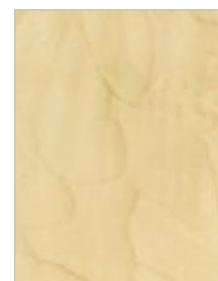


phase VI: Apply a coat of Decorative Wax and polish the surface.

Lime Stucco is available on order.



mineral redness



sunny glow



lime rock



Cassel soil



graphite greyiness

other
COLOURS

colouring: 3 tubes of Pigment Concentrate 40 ml/ 4 kg of Classic Stucco

products necessary for the effect application and their average consumption:



PRIMER

approx. 0,13 l/m²



CLASSIC
STUCCO

approx. 0,5 kg/m²

colouring



PIGMENT
CONCENTRATE 40 ml
Mineral Redness

3 pcs / 4 kg of
Classic Stucco



DECORATIVE
WAX

approx. 0,016 kg/m²



Owing to its properties Sandstone allows to form coatings coming back to the style of antique durable and extremely decorative plasters.

phases of the **EFFECT** application



phase I: Prime the surface with Bonding Primer.



phase II: Apply approx. 2-3 mm thick uniform coat of Sandstone with a venetian plastering trowel.



phase III: Shape the pattern with a trowel led flat upon the material.



phase IV: Coat the surface with Decorative Varnish.



phase V: Apply Varnish coloured with Pigment.



phase VI: Wash out excessive Varnish from material tops with a damp sponge.

CHECK the instructional movie on www.fox-dekurator.pl/filmy



milky cocoa



caramel tinge



chocolate bar



Cassel soil



graphite greyness

other
COLOURS

colouring: 1 tube of Pigment 20 ml/ 1 l of Decorative Varnish

products necessary for the effect application and their average consumption:



BONDING
PRIMER

approx. 0,14 kg/m²



SANDSTONE

approx. 1 kg/m²



DECORATIVE
VARNISH

approx. 0,07 l/m²



DECORATIVE
VARNISH

approx. 0,04 l/m²

PIGMENT 20 ml
Milky Cocoa
1 pc / 1 l of
Decorative Varnish



Provençal Clay is a 100% ecological product. It dampens sounds, absorbs smells and cleans – bonds and neutralizes pollution, additionally it is resistant to mould and fungi.

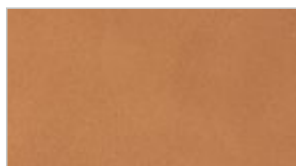
phases of the **EFFECT** application



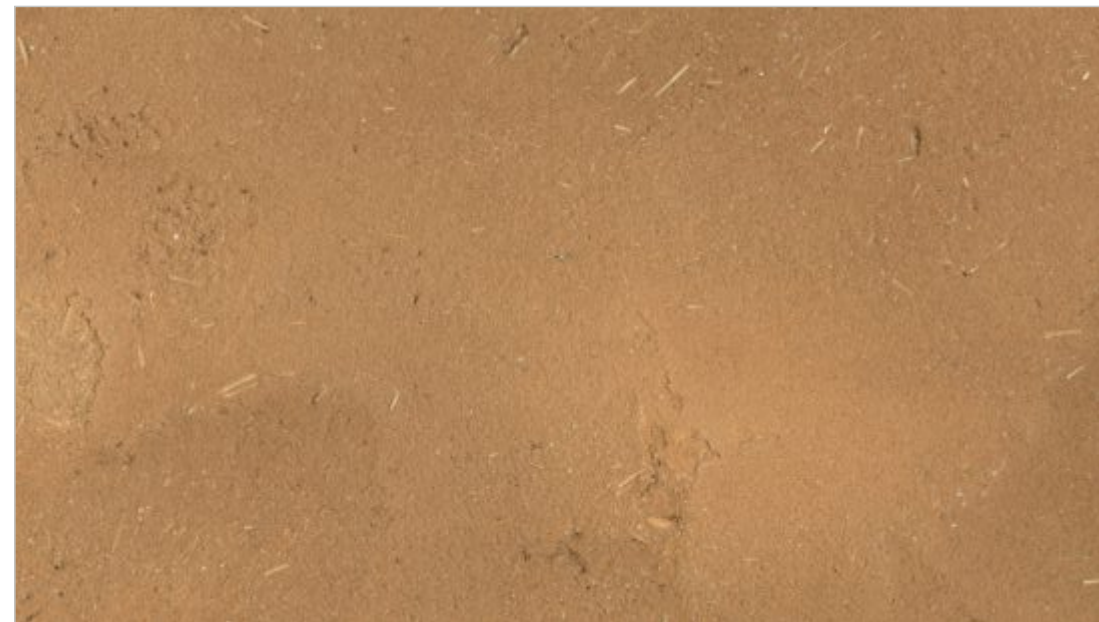
phase I: Apply Provençal Clay upon the primed surface with a trowel, slightly smooth.



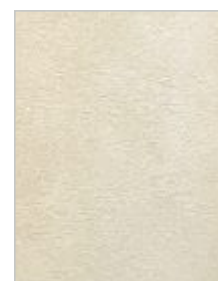
phase II: After drying, remove unbound grains with a soft paintbrush.



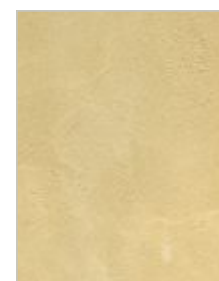
phase III: Owing to its properties it does not require any protecting coats.



orange soil with addition of straw



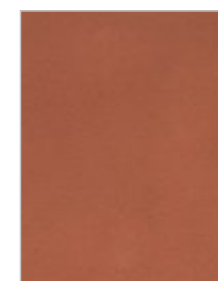
natural



heather sand



brown soil



pink sand

other
COLOURS

ready-to-use colours – available in stock

products necessary for the effect application and their average consumption:



BONDING
PRIMER

approx. 0,14 kg/m²



PROVENÇAL
CLAY

approx. 1 kg/m²

* optionally



STRAW

1 pc / 5 kg of
Provençal Clay

effect GLAZES

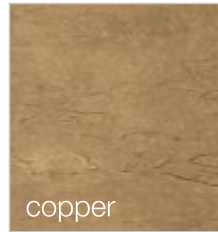
METALLIC VARNISH



silver



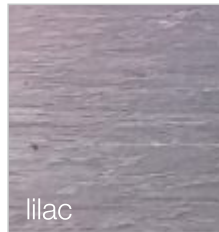
gold



copper

COLOURS

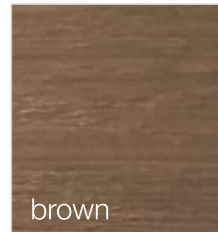
interferential varnish CHAMELEON



lilac



yellow



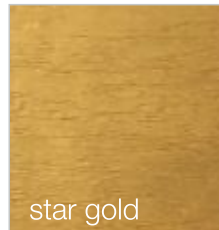
brown

COLOURS

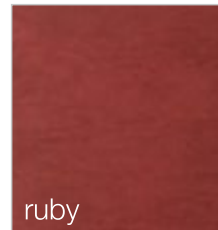
semi-transparent metallic paint METALLIC PATINA



platinum



star gold



ruby

COLOURS

METALLIC VARNISH

PACKAGING	COVERAGE	NUMBER OF COATS	COLOUR
0,3 l	for 5 m ²	1 - 3	silver, gold, copper
1 l	for 15 m ²		

interferential varnish CHAMELEON

PACKAGING	COVERAGE	NUMBER OF COATS	COLOUR
0,3 l	for 5 m ²	1 - 3	lilac, yellow, brown
1 l	for 15 m ²		

semi-transparent metallic paint METALLIC PATINA

PACKAGING	COVERAGE	NUMBER OF COATS	COLOUR
0,3 l	for 7 m ²	1	platinum, star gold, ruby

AUXILIARY products

additive to decorative varnish BROCADE



silver



multicolour



gold

COLOURS

silver brocade is advised with cold colours whereas gold brocade with warm colours

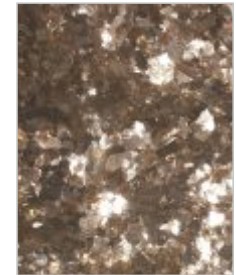
additive to decorative products MICA



silver – fine



silver – large



gold – large

COLOURS

mica (fine) – additive to Lime Travertine – 1 package / 5 kg of Travertine e.g. Terra Antica effect

mica (large) – additive to Decorative Varnish – 1 package / 1 l of Varnish e.g. Snowflakes effect

additive to decorative varnish BROCADE

PACKAGING	COVERAGE	NUMBER OF COATS	COLOUR
10 g	1 package/1 l of Varnish	1-2	silver, multicolour, gold

additive to decorative products MICA

PACKAGING	COVERAGE	NUMBER OF COATS	COLOUR
50 g	1 package/5 kg of Travertine	1	silver-fine
50 g	1 package/1 l of Varnish		silver-large, gold-large

additive to Provencal Clay STRAW

PACKAGING	COVERAGE	NUMBER OF COATS	COLOUR
40 g	1 package/5 kg of Clay	1	-

PIGMENTS for manual colouring

- Colours easy to form
- Repeatable colours during unassisted colouring of FOX DEKORATOR products with the use of tubes with pigments



PIGMENT – tube 20 ml

Recommended for colouring of Decorative Varnish and small volumes of decorative masses (Relief 1 kg/ Classic Stucco 1 kg/ ZEN Paint 1 l) and delicate colour shades formation.



PIGMENT CONCENTRATE – tube 40 ml

Recommended for colouring large volume buckets (Relief 4 kg, 8 kg/ Sandstone 4 kg, 8 kg, 16 kg/ Classic Stucco 4 kg, 8 kg/ ZEN Paint 4 l/ Lime Travertine 5 kg, 10 kg)



- 1 pigment concentrate 40 ml = 8 pigments 20 ml

decorating TOOLS



Roller Dekorator
chamois scraps
18 cm



Roller Dekorator
crinkly foil
18 cm



Roller Dekorator
brush 18 cm



Roller Dekorator
smooth sponge
18 cm



Roller Dekorator
perforated sponge
18 cm



Trowel Dekorator
brush
21 x 9 cm



Trowel Dekorator
smooth sponge
21 x 9 cm



Wall Scraper
4 pcs



Venetian Plastering
Trowel small
20 x 8.5 cm



Venetian Plastering
Trowel trapezoid
24 x 11.7 cm

preparation and protection of WALLS

PACKAGING	COVERAGE	NUMBER OF COATS	COLOUR
-----------	----------	-----------------	--------

beneath structural plasters **BONDING PRIMER**



1 kg	approx. 7 m ²	1	white
3 kg	approx. 21 m ²		

primer beneath plasters and paints **PRIMER**



1 kg	approx. 8 m ²	1-2	white
5 kg	approx. 40 m ²		

ready-to-use filling mass **FINITO**



4 kg	approx. 4 m ²	1-2	white
8 kg	approx. 8 m ²		
16 kg	approx. 16 m ²		

base coat paint **INITIUM**



1 L	approx. 9 m ²	1-2	white
5 L	approx. 45 m ²		
10 L	approx. 90 m ²		

preparation protecting surfaces **DECORATIVE VARNISH**



1 L	approx. 15 m ²	1-3	matt, satin, pearl
4 L	approx. 45 m ²		

preparation strengthening gloss and colour **DECORATIVE WAX**




0,5 kg	approx. 30 m ²	1-2	milky
--------	---------------------------	-----	-------

TECHNICAL DATA decorative and structural paints

PACKAGING	COVERAGE	NUMBER OF COATS	COLOUR
-----------	----------	-----------------	--------


decorative effect for walls **DIAMENTO**

	1 L	approx. 10 m ² per coat	1-2	luna terra uran venus mars
--	-----	------------------------------------	-----	--


decorative effect for walls **KALAHARI**

	1 L	approx. 10 m ²	1	sol lapis sabulum nebula vesper
--	-----	---------------------------	---	---


set of products **RUST EFFECT**

	set	approx. 10 m ²	1	brown-rust
--	-----	---------------------------	---	------------


set of products **BRUSHED ALUMINUM EFFECT**

	set	approx. 10 m ²	1	silver-grey
---	-----	---------------------------	---	-------------

grainy structural paint **ZEN PAINT**

	1 L	approx. 7 m ²	1	white
	4 L	approx. 28 m ²		

semi-transparent pearl paint **PEARL PATINA and PEARL PATINA 3D**

	1 L	approx. 12 m ²	1-2	pearl
	4 L	approx. 48 m ²		


TECHNICAL DATA structural plasters

PACKAGING	COVERAGE	NUMBER OF COATS	COLOUR
-----------	----------	-----------------	--------


structural plaster **SANDSTONE**

	4 kg	approx. 4 m ²	1	white
	8 kg	approx. 8 m ²		
	16 kg	approx. 16 m ²		


plaster for spatial effects **RELIEF**

	1 kg	approx. 1,5 m ²	1-3	white
	4 kg	approx. 6 m ²		
	8 kg	approx. 12 m ²		
	16 kg	approx. 24 m ²		

mineral decorative plaster **LIME TRAVERTINE**

	5 kg	approx. 7 m ² (super fine) approx. 3 m ² (fine) approx. 2 m ² (coarse)	2	white
	10 kg	approx. 14 m ² (super fine) approx. 6 m ² (fine) approx. 4 m ² (coarse)		

decorative lime plaster **CONCRETE**

	5 kg	approx. 3 m ²	2	grey
	10 kg	approx. 6 m ²		

precious thin-coat plaster **CLASSIC STUCCO**

	1 kg	approx. 2 m ²	1-3	white
	4 kg	approx. 8 m ²		
	8 kg	approx. 16 m ²		

mineral decorative plaster **PROVENÇAL CLAY**

	5 kg	approx. 5 m ²	1	natural, orange soil, brown soil, heather sand, pink sand
	10 kg	approx. 10 m ²		