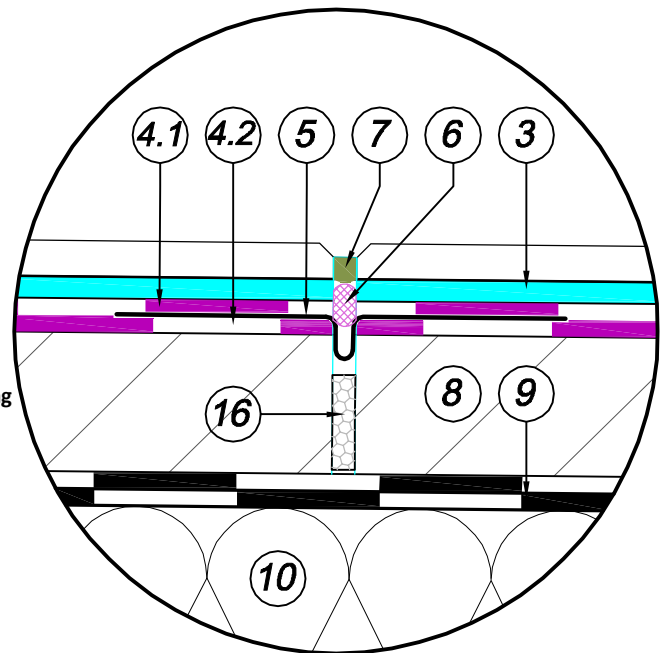


1. **Ceramic tile**
2. **Grout (one of the following):**  
 Atlas Artis Grout  
 Atlas Tight Grout
3. **Adhesive (one of the following):**  
 Atlas Plus Mega  
 Atlas Plus Mega White  
 Atlas Plus  
 Atlas Plus White  
 Atlas Geoflex
- 4.1 **Under tile waterproofing - second layer:**  
 Atlas Woder DUO
- 4.2 **Under tile waterproofing - first layer:**  
 Atlas Woder DUO
5. **Sealing tape:**  
 Atlas Hydroband 3G
6. **ATLAS Backer Rod**
7. **Elastic sealing (one of the following):**  
 Atlas Artis silicone  
 Atlas Siltan S
8. **Pressure layer - cement screed (one of the following):**  
 Atlas Postar 10  
 Atlas Postar 20  
 Atlas Postar 40  
 Atlas Postar 80
9. **Separating layer**  
 PE membrane
10. **Thermal insulation layer**  
 XPS - thickness according to thermal calculations
11. **Vapour control membrane and interlayer waterproofing**  
 Atlas SMB Bitumen Membrane
12. **Priming mass**  
 Atlas General-purpose Bitumen Mass
13. **Slope layer - screed (one of the following):**  
 Atlas Postar 10  
 Atlas Postar 20  
 Atlas Postar 40  
 Atlas Postar 80  
 Atlas ZW330
14. **Contact layer:**  
 Atlas Adher
15. **Structural slab**
16. **Expansion joint filling:**  
 Polystyrene strip



**No. 5.5 Terrace over a heated room - area expansion joint detail**