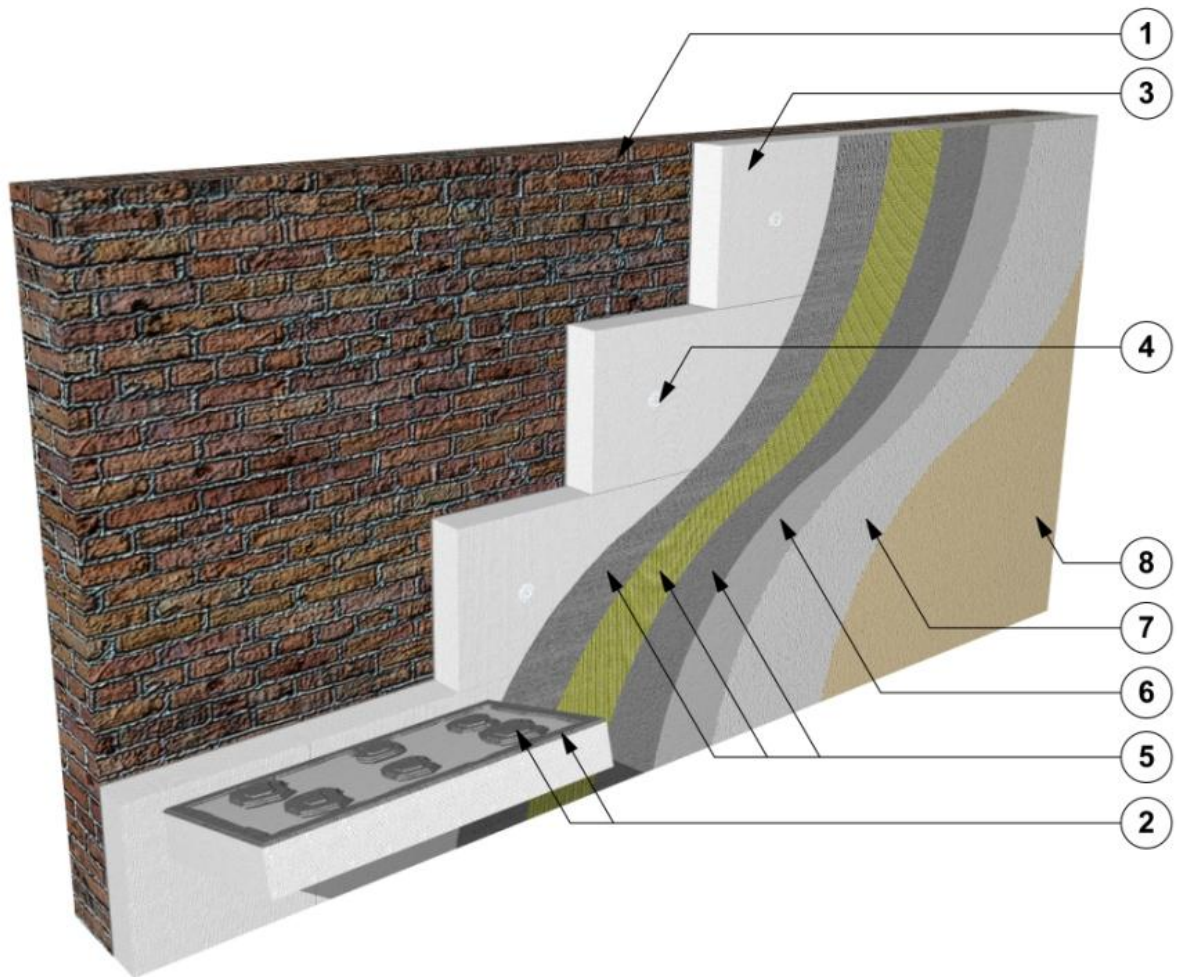


STD-001-0
EPS Insulation

Figure 1.

Thermal Insulation Composite Systems ATLAS/AVAL

Layers of Thermal Insulation Composite System ATLAS/AVAL with expanded polystyrene boards EPS (standard and elastified)



1. Substrate

2. Insulation adhesive

– ATLAS STOPTER K-10/AVAL KT 83

– ATLAS STOPTER K-20/AVAL KT 85

– ATLAS HOTER S/AVAL KT 53

– ATLAS HOTER U/AVAL KT 55

3. Thermal insulation

– standard expanded polystyrene EPS

– elastified expanded polystyrene EPS

4. Anchor

5. Reinforced layer

– Insulation adhesive ATLAS STOPTER K-20/AVAL KT 85

– Insulation adhesive ATLAS HOTER U/AVAL KT 55

– Glass fibre reinforcing mesh

6. Render primer

– ATLAS CERPLAST/AVAL KT 16 (with mineral render ATLAS CERMIT/AVAL KT 35/AVAL KT 137 and acrylic render ATLAS CERMIT/AVAL KT 60/AVAL KT 64)

– ATLAS SILKAT ASX/AVAL KT 15 (with silicate render ATLAS SILKAT/AVAL KT 72/AVAL KT 73)

– ATLAS SILKON ANX/AVAL KT 76 (with silicone render ATLAS SILKON/AVAL KT 74/AVAL KT 75)

7. Render coat

– Mineral render ATLAS CERMIT/AVAL KT 35/AVAL KT 137

– Acrylic render ATLAS CERMIT/AVAL KT 60/AVAL KT 64

– Silicate render ATLAS SILKAT/AVAL KT 72/AVAL KT 73

– Silicone render ATLAS SILKON/AVAL KT 74/AVAL KT 75

8. Top paint coat (optional)

– Acrylic paint ATLAS ARKOL E/AVAL KT 44

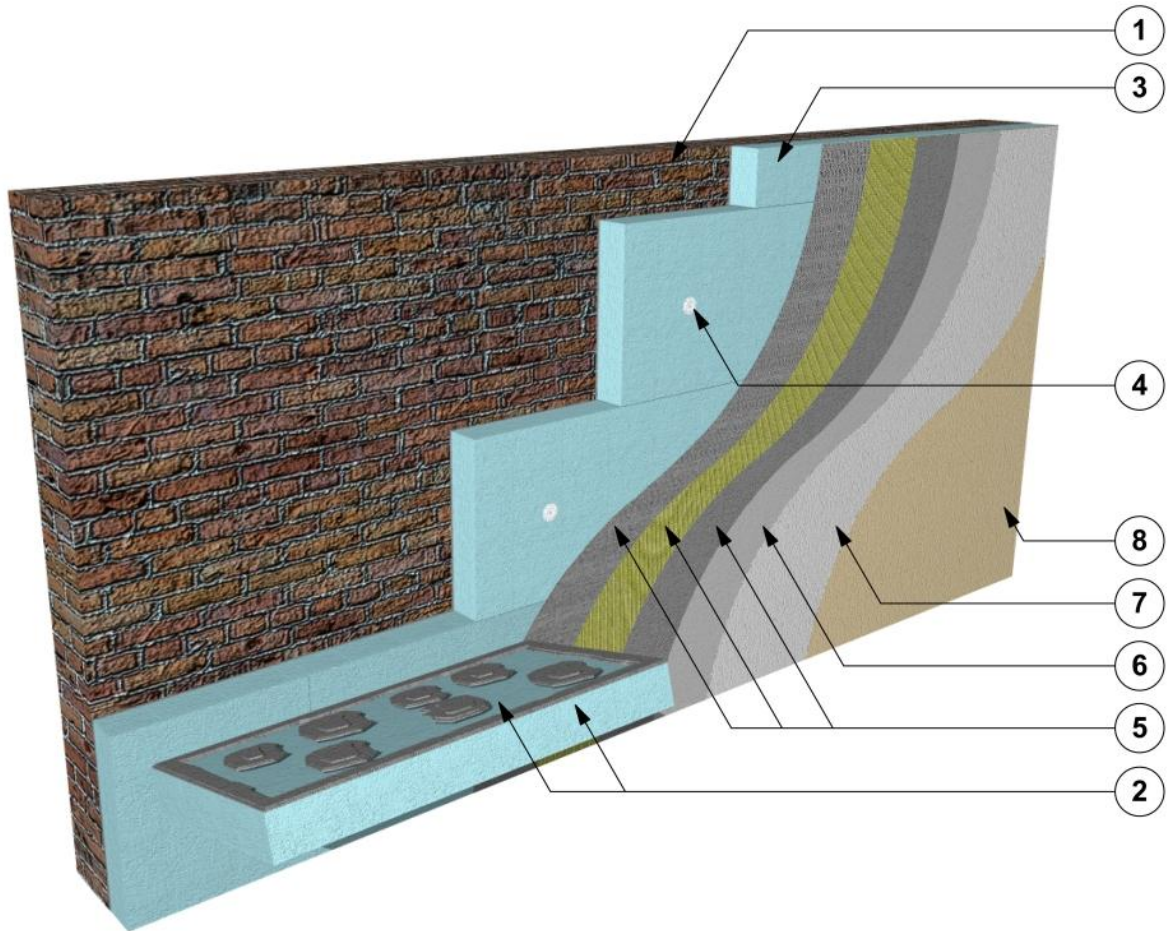
– Silicate paint ATLAS ARKOL S/AVAL KT 54 (with primer ATLAS ARKOL SX/AVAL KT 52)

– Silicone paint ATLAS ARKOL N/AVAL KT 48 and ATLAS FASTEL/AVAL KT 46 (with primer ATLAS ARKOL NX/AVAL KT 47)

– Silicone paint ATLAS FASTEL-NOVA

STD-002-0
XPS Insulation

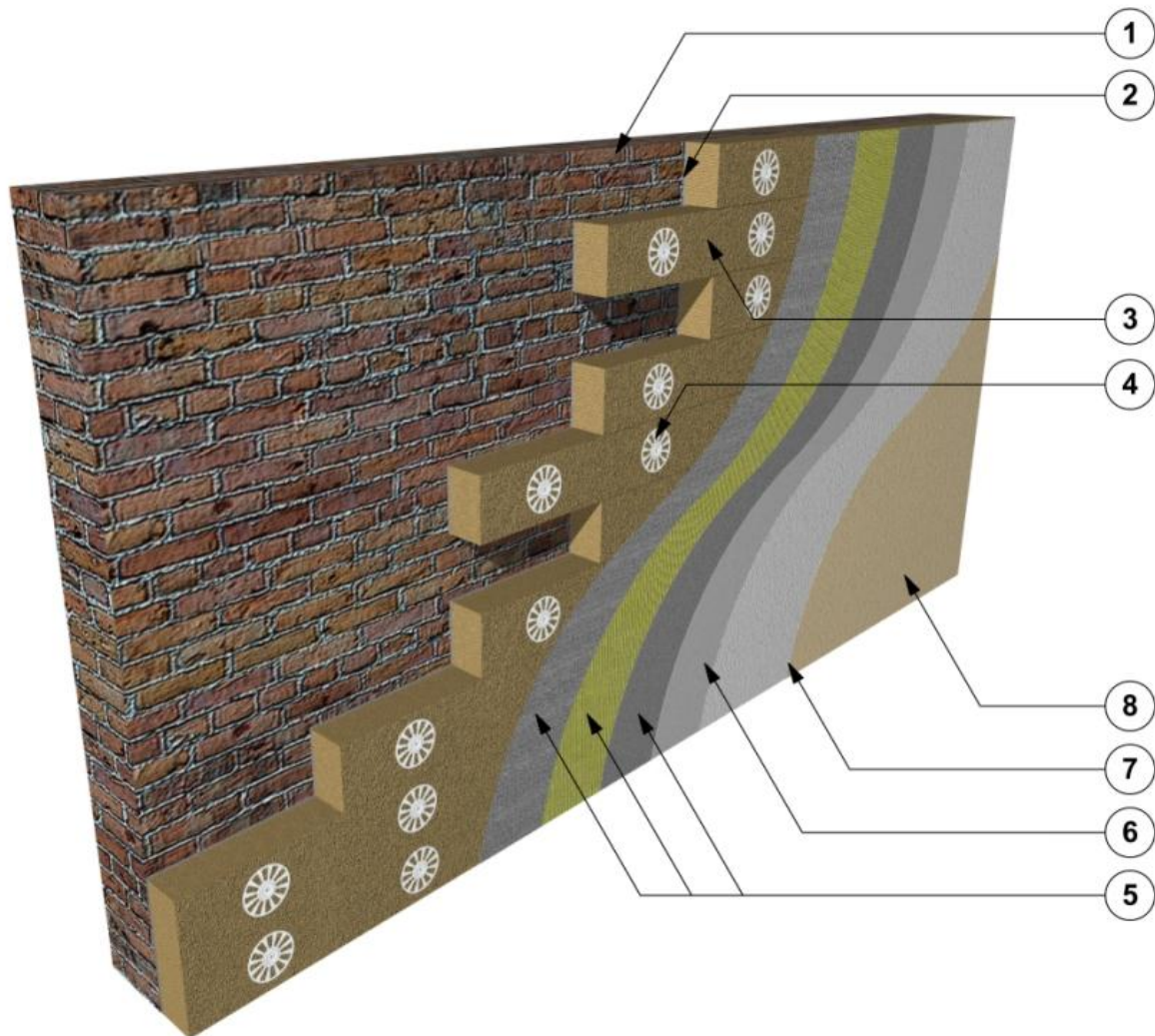
Figure 2.
Thermal Insulation Composite Systems ATLAS
Layers of Thermal Insulation Composite System ATLAS with extruded polystyrene boards XPS



1. Substrate
2. Insulation adhesive
 - ATLAS STOPTER K-10/AVAL KT 83
 - ATLAS STOPTER K-20/AVAL KT 85
 - ATLAS HOTER S/AVAL KT 53
 - ATLAS HOTER U/AVAL KT 55
3. Thermal insulation
 - extruded polystyrene XPS
4. Anchor
5. Reinforced layer
 - Insulation adhesive ATLAS STOPTER K-20/AVAL KT 85
 - Insulation adhesive ATLAS HOTER U/AVAL KT 55
 - Glass fibre reinforcing mesh
6. Render primer
 - ATLAS CERPLAST/AVAL KT 16 (with mineral render ATLAS CERMIT/AVAL KT 35/AVAL KT 137 and acrylic render ATLAS CERMIT/AVAL KT 60/AVAL KT 64)
 - ATLAS SILKAT ASX/AVAL KT 15 (with silicate render ATLAS SILKAT/AVAL KT 72/AVAL KT 73)
 - ATLAS SILKON ANX/AVAL KT 76 (with silicone render ATLAS SILKON/AVAL KT 74/AVAL KT 75)
7. Render coat
 - Mineral render ATLAS CERMIT/AVAL KT 35/AVAL KT 137
 - Acrylic render ATLAS CERMIT/AVAL KT 60/AVAL KT 64
 - Silicate render ATLAS SILKAT/AVAL KT 72/AVAL KT 73
 - Silicone render ATLAS SILKON/AVAL KT 74/AVAL KT 75
8. Top paint coat (optional)
 - Acrylic paint ATLAS ARKOL E/AVAL KT 44
 - Silicate paint ATLAS ARKOL S/AVAL KT 54 (with primer ATLAS ARKOL SX/AVAL KT 52)
 - Silicone paint ATLAS ARKOL N/AVAL KT 48 and ATLAS FASTEL/AVAL KT 46 (with primer ATLAS ARKOL NX/AVAL KT 47)
 - Silicone paint ATLAS FASTEL-NOVA

STD-003-0
MW Insulation

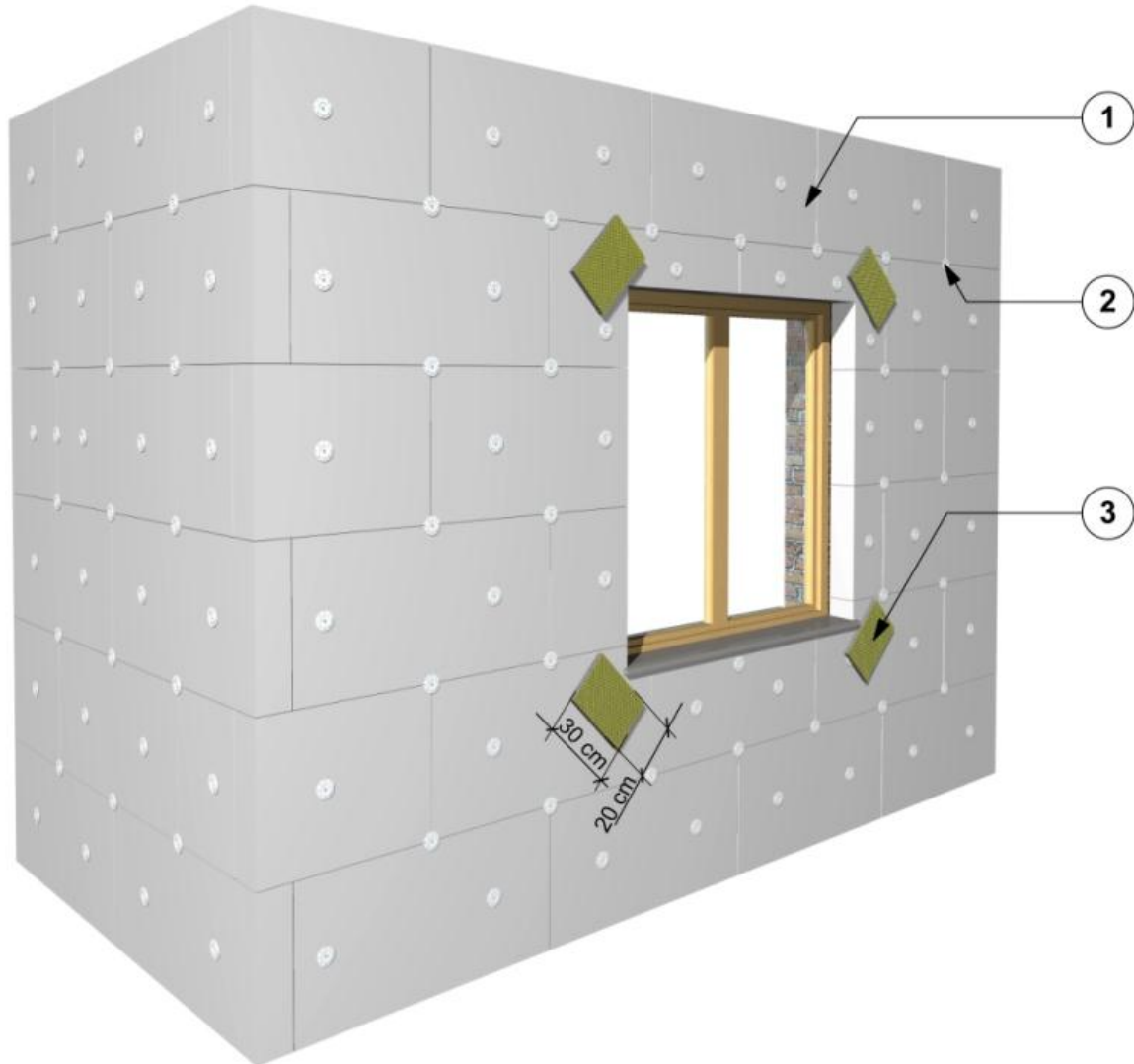
Figure 3.
Thermal Insulation Composite Systems ATLAS/AVAL
Layers of Thermal Insulation Composite System ATLAS/AVAL ROKER with mineral wool boards (MW)



1. Substrate
2. Insulation adhesive
 - ATLAS ROKER W-20/AVAL KT 190
3. Thermal insulation
 - mineral wool (MW)
4. Anchor (with hammer in steel pin)
5. Reinforced layer
 - Insulation adhesive ATLAS ROKER W-20/AVAL KT 190
 - Glass fibre reinforcing mesh
6. Render primer
 - ATLAS CERPLAST/AVAL KT 16 (with mineral render ATLAS CERMIT/AVAL KT 35/AVAL KT 137)
 - ATLAS SILKAT ASX/AVAL KT 15 (with silicate render ATLAS SILKAT/AVAL KT 72/AVAL KT 73)
 - ATLAS SILKON ANX/AVAL KT 76 (with silicone render ATLAS SILKON/AVAL KT 74/AVAL KT 75)
7. Render coat
 - Mineral render ATLAS CERMIT/AVAL KT 35/AVAL KT 137
 - Silicate render ATLAS SILKAT/AVAL KT 72/AVAL KT 73
 - Silicone render ATLAS SILKON/AVAL KT 74/AVAL KT 75
8. Top paint coat (optional)
 - Silicate paint ATLAS ARKOL S/AVAL KT 54 (with primer ATLAS ARKOL SX/AVAL KT 52)
 - Silicone paint ATLAS ARKOL N/AVAL KT 48 and ATLAS FASTEL/AVAL KT 46 (with primer ATLAS ARKOL NX/AVAL KT 47)
 - Silicone paint ATLAS FASTEL-NOVA

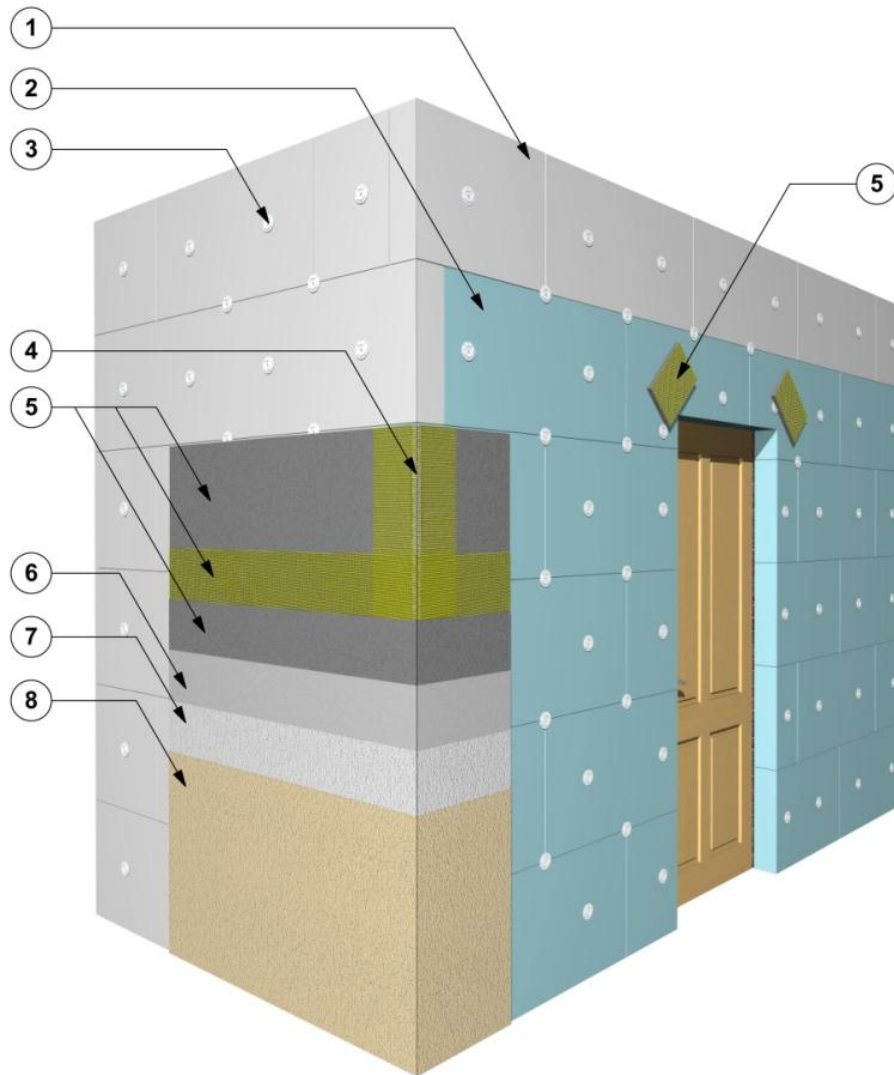
STD-004-0 reinforcing patches

Figure 4
Thermal Insulation Composite Systems ATLAS/AVAL
Detail scheme: Arrangement of anchors and additional reinforcing at corners of window/door reveals
(with additional patches of reinforcing mesh)



1. Thermal insulation
 - standard expanded polystyrene EPS
 - elastified expanded polystyrene EPS
2. Anchor
3. Reinforced layer
 - Insulation adhesive ATLAS STOPTER K-20/AVAL KT 85
 - Insulation adhesive ATLAS HOTER U/AVAL KT 55
 - Glass fibre reinforcing mesh (patches min. 200 x 300 mm)

Figure 5.
Thermal Insulation Composite Systems ATLAS/AVAL
Detail scheme: Insulation of external wall corner (with a corner profile)

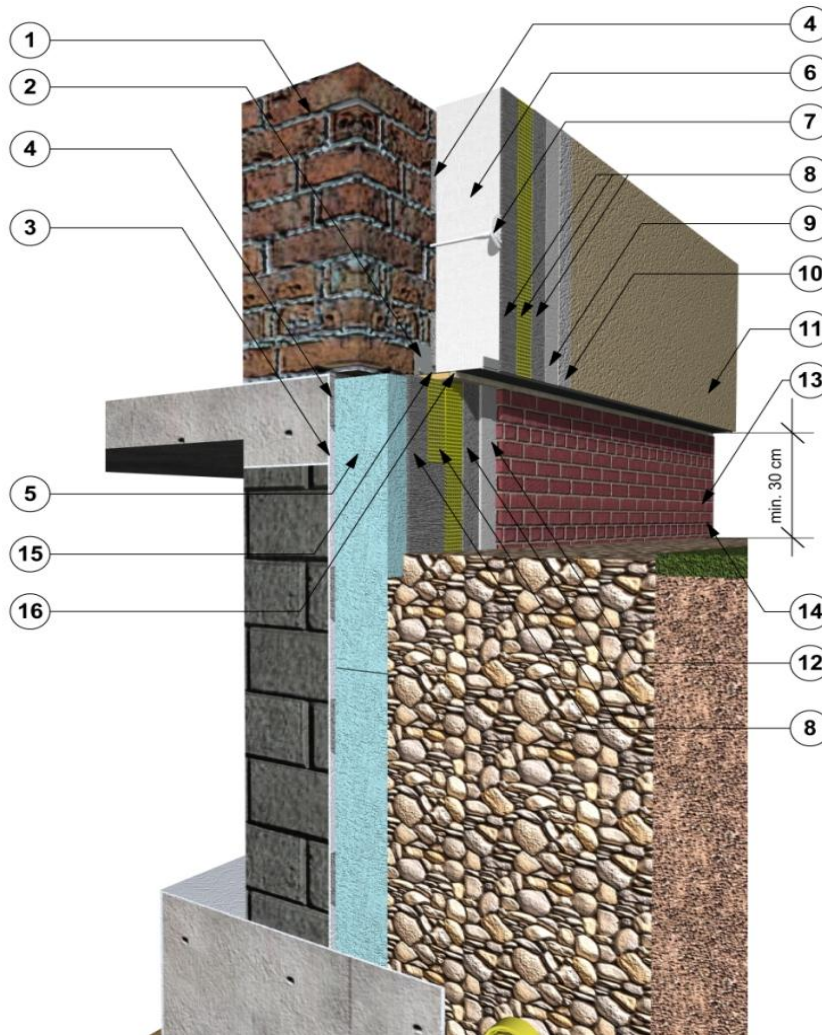


1. Thermal insulation
 - standard expanded polystyrene EPS
 - elastified expanded polystyrene EPS
2. Thermal insulation
 - extruded polystyrene XPS
3. Anchor
4. Corner profile with mesh
5. Reinforced layer
 - Insulation adhesive ATLAS STOPTER K-20/AVAL KT 85
 - Insulation adhesive ATLAS HOTER U/AVAL KT 55
 - Glass fibre reinforcing mesh
6. Render primer
 - ATLAS CERPLAST/AVAL KT 16 (with mineral render ATLAS CERMIT/AVAL KT 35/AVAL KT 137 and acrylic render ATLAS CERMIT/AVAL KT 60/AVAL KT 64)
 - ATLAS SILKAT ASX/AVAL KT 15 (with silicate render ATLAS SILKAT/AVAL KT 72/AVAL KT 73)

- ATLAS SILKON ANX/AVAL KT 76 (with silicone render ATLAS SILKON/AVAL KT 74/AVAL KT 75)
7. Render coat
 - Mineral render ATLAS CERMIT/AVAL KT 35/AVAL KT 137
 - Acrylic render ATLAS CERMIT/AVAL KT 60/AVAL KT 64
 - Silicate render ATLAS SILKAT/AVAL KT 72/AVAL KT 73
 - Silicone render ATLAS SILKON/AVAL KT 74/AVAL KT 75
 8. Top paint coat (optional)
 - Acrylic paint ATLAS ARKOL E/AVAL KT 44
 - Silicate paint ATLAS ARKOL S/AVAL KT 54 (with primer ATLAS ARKOL SX/AVAL KT 52)
 - Silicone paint ATLAS ARKOL N/AVAL KT 48 and ATLAS FASTEL/AVAL KT 46 (with primer ATLAS ARKOL NX/AVAL KT 47)
 - Silicone paint ATLAS FASTEL-NOVA

STD-006a-0
Base and Plinth

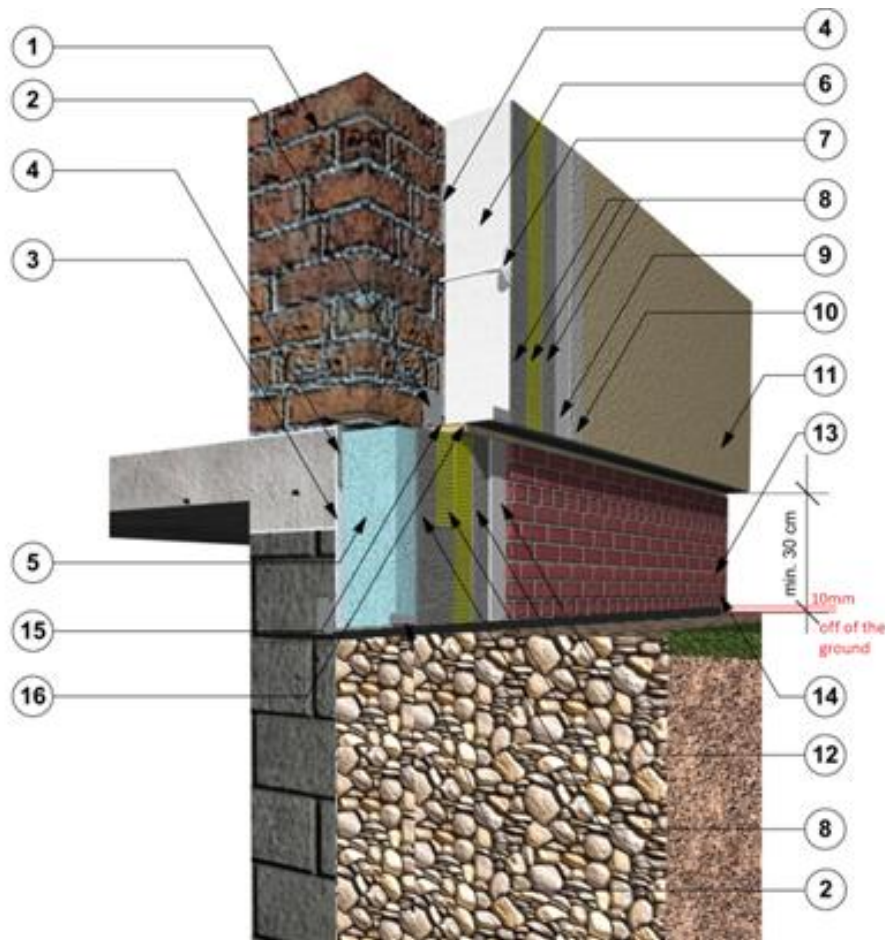
Figure 6.
Thermal Insulation Composite Systems ATLAS/AVAL
Detail scheme – Base and plinth insulation with subfloor vent



- | | |
|---|--|
| <ol style="list-style-type: none"> 1. Substrate 2. Starter track 3. ATLAS WODER E/AVAL KL 51 sealing layer 4. Insulation adhesive <ul style="list-style-type: none"> - ATLAS STOPTER K-10/AVAL KT 83 - ATLAS STOPTER K-20/AVAL KT 85 - ATLAS HOTER S/AVAL KT 53 - ATLAS HOTER U/AVAL KT 55 5. Thermal insulation <ul style="list-style-type: none"> - XPS or HD EPS 6. Thermal insulation <ul style="list-style-type: none"> - standard expanded polystyrene EPS - elastified expanded polystyrene EPS 7. Anchor 8. Reinforced layer <ul style="list-style-type: none"> - Insulation adhesive ATLAS STOPTER K-20/AVAL KT 85 - Insulation adhesive ATLAS HOTER U/AVAL KT 55 - Glass fibre reinforcing mesh 9. Render primer <ul style="list-style-type: none"> - ATLAS CERPLAST/AVAL KT 16 (with mineral render ATLAS CERMIT/AVAL KT 35/AVAL KT 137 and acrylic render ATLAS CERMIT/AVAL KT 60/AVAL KT 64) - ATLAS SILKAT ASX/AVAL KT 15 (with silicate render ATLAS SILKAT/AVAL KT 72/AVAL KT 73) | <ul style="list-style-type: none"> - ATLAS SILKON ANX/AVAL KT 76 (with silicone render ATLAS SILKON/AVAL KT 74/AVAL KT 75) 10. Render coat <ul style="list-style-type: none"> - Mineral render ATLAS CERMIT/AVAL KT 35/AVAL KT 137 - Acrylic render ATLAS CERMIT/AVAL KT 60/AVAL KT 64 - Silicate render ATLAS SILKAT/AVAL KT 72/AVAL KT 73 - Silicone render ATLAS SILKON/AVAL KT 74/AVAL KT 75 11. Top paint coat (optional) <ul style="list-style-type: none"> - Acrylic paint ATLAS ARKOL E/AVAL KT 44 - Silicate paint ATLAS ARKOL S/AVAL KT 54 (with primer ATLAS ARKOL SX/AVAL KT 52) - Silicone paint ATLAS ARKOL N/AVAL KT 48 and ATLAS FASTEL/AVAL KT 46 (with primer ATLAS ARKOL NX/AVAL KT 47) - Silicone paint ATLAS FASTEL-NOVA 12. ATLAS PLUS/AVAL KM 17 adhesive 13. Subfloor vent covering 14. ATLAS/ATLAS EXTRA/ATLAS ARTIS/AVAL EXTRA grout 15. Expanding tape 16. ATLAS SILTON S sanitary silicone |
|---|--|

STD-0006b-0
Base and Plinth

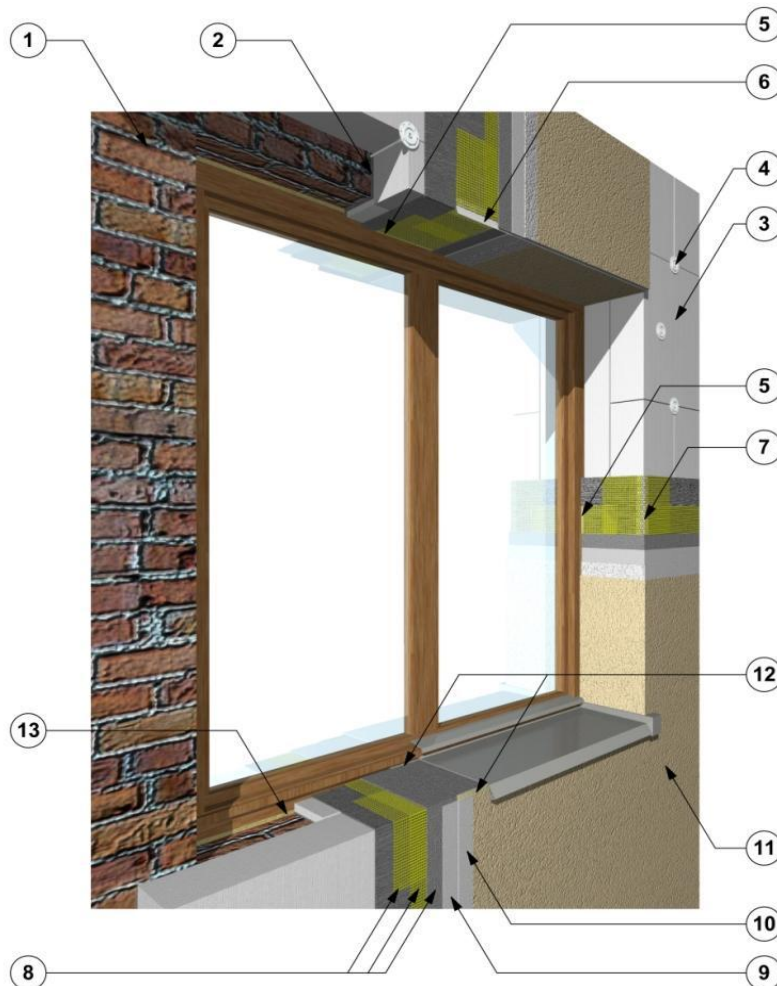
Figure 6b.
Thermal Insulation Composite Systems ATLAS/AVAL
Detail scheme – Base and plinth insulation



- | | |
|--|---|
| <ol style="list-style-type: none"> 1. Substrate 2. Starter track 3. ATLAS WODER E/AVAL KL 51 sealing layer 4. Insulation adhesive <ul style="list-style-type: none"> - ATLAS STOPTER K-10/AVAL KT 83 - ATLAS STOPTER K-20/AVAL KT 85 - ATLAS HOTER S/AVAL KT 53 - ATLAS HOTER U/AVAL KT 55 5. Thermal insulation <ul style="list-style-type: none"> - extruded polystyrene XPS or HD expanded polystyrene 6. Thermal insulation <ul style="list-style-type: none"> - standard expanded polystyrene EPS - elastified expanded polystyrene EPS 7. Anchor 8. Reinforced layer <ul style="list-style-type: none"> - Insulation adhesive ATLAS STOPTER K-20/AVAL KT 85 - Insulation adhesive ATLAS HOTER U/AVAL KT 55 - Glass fibre reinforcing mesh 9. Render primer <ul style="list-style-type: none"> - ATLAS CERPLAST/AVAL KT 16 (with mineral render ATLAS CERMIT/AVAL KT 35/AVAL KT 137 and acrylic render ATLAS CERMIT/AVAL KT 60/AVAL KT 64) - ATLAS SILKAT ASX/AVAL KT 15 (with silicate render ATLAS SILKAT/AVAL KT 72/AVAL KT 73) - ATLAS SILKON ANX/AVAL KT 76 (with silicone render ATLAS SILKON/AVAL KT 74/AVAL KT 75) | <ol style="list-style-type: none"> 10. Render coat <ul style="list-style-type: none"> - Mineral render ATLAS CERMIT/AVAL KT 35/AVAL KT 137 - Acrylic render ATLAS CERMIT/AVAL KT 60/AVAL KT 64 - Silicate render ATLAS SILKAT/AVAL KT 72/AVAL KT 73 - Silicone render ATLAS SILKON/AVAL KT 74/AVAL KT 75 11. Top paint coat (optional) <ul style="list-style-type: none"> - Acrylic paint ATLAS ARKOL E/AVAL KT 44 - Silicate paint ATLAS ARKOL S/AVAL KT 54 (with primer ATLAS ARKOL SX/AVAL KT 52) - Silicone paint ATLAS ARKOL N/AVAL KT 48 and ATLAS FASTEL/AVAL KT 46 (with primer ATLAS ARKOL NX/AVAL KT 47) - Silicone paint ATLAS FASTEL-NOVA 12. ATLAS PLUS/AVAL KM 17 adhesive 13. Clinker tiles covering 14. ATLAS/ATLAS EXTRA/ATLAS ARTIS/AVAL EXTRA grout 15. Expanding tape 16. ATLAS SILTON S sanitary silicone |
|--|---|

STD-0007-0
Window and
Reveal

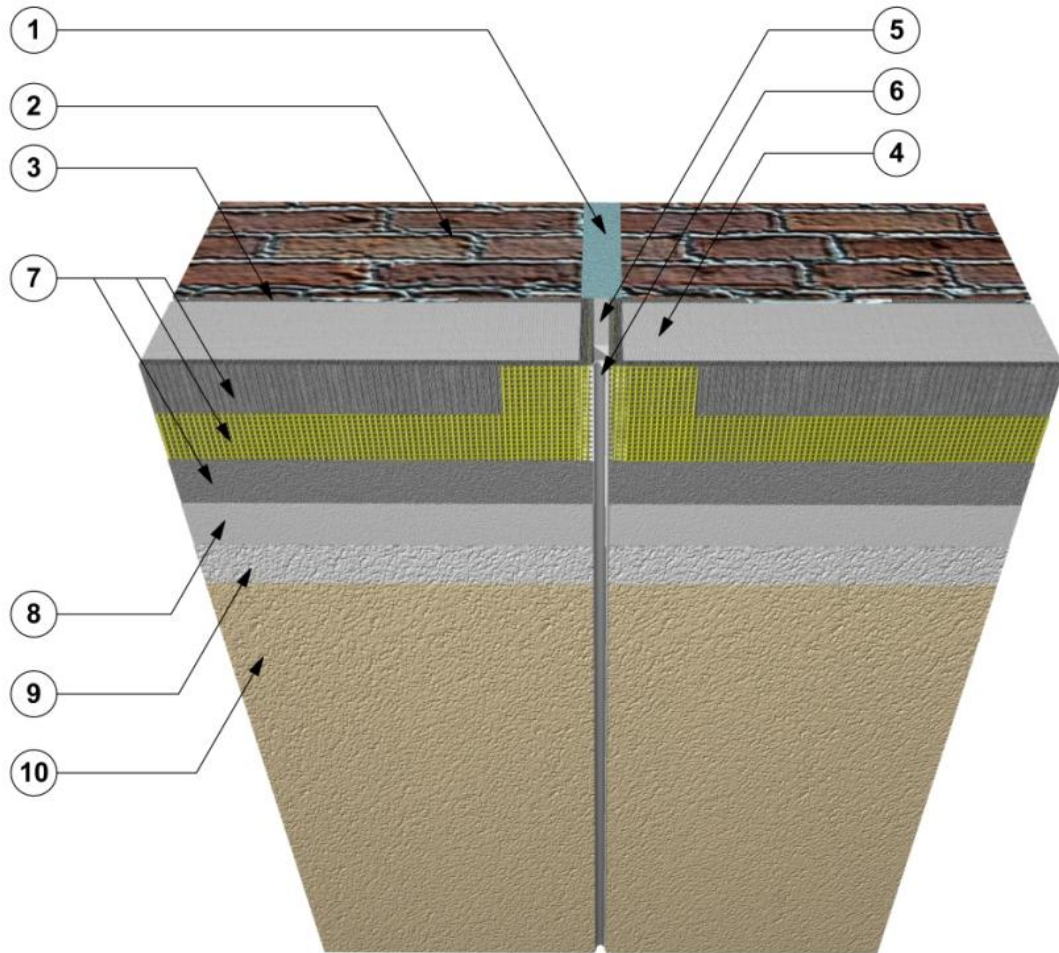
Figure 7.
Thermal Insulation Composite Systems ATLAS/AVAL
Detail scheme: Window reveal insulation



1. Substrate
2. Insulation adhesive
 - ATLAS STOPTER K-10/AVAL KT 83
 - ATLAS STOPTER K-20/AVAL KT 85
 - ATLAS HOTER S/AVAL KT 53
 - ATLAS HOTER U/AVAL KT 55
3. Thermal insulation
 - standard expanded polystyrene EPS
 - elastified expanded polystyrene EPS
4. Anchor
5. Window profile
6. Drip profile
7. Corner profile with mesh
8. Reinforced layer
 - Insulation adhesive ATLAS STOPTER K-20/AVAL KT 85
 - Insulation adhesive ATLAS HOTER U/AVAL KT 55
 - Glass fibre reinforcing mesh
9. Render primer
 - ATLAS CERPLAST/AVAL KT 16 (with mineral render ATLAS CERMIT/AVAL KT 35/AVAL KT 137 and acrylic render ATLAS CERMIT/AVAL KT 60/AVAL KT 64)
- ATLAS SILKAT ASX/AVAL KT 15 (with silicate render ATLAS SILKAT/AVAL KT 72/AVAL KT 73)
- ATLAS SILKON ANX/AVAL KT 76 (with silicone render ATLAS SILKON/AVAL KT 74/AVAL KT 75)
10. Render coat
 - Mineral render ATLAS CERMIT/AVAL KT 35/AVAL KT 137
 - Acrylic render ATLAS CERMIT/AVAL KT 60/AVAL KT 64
 - Silicate render ATLAS SILKAT/AVAL KT 72/AVAL KT 73
 - Silicone render ATLAS SILKON/AVAL KT 74/AVAL KT 75
11. Top paint coat (optional)
 - Acrylic paint ATLAS ARKOL E/AVAL KT 44
 - Silicate paint ATLAS ARKOL S/AVAL KT 54 (with primer ATLAS ARKOL SX/AVAL KT 52)
 - Silicone paint ATLAS ARKOL N/AVAL KT 48 and ATLAS FASTEL/AVAL KT 46 (with primer ATLAS ARKOL NX/AVAL KT 47)
 - Silicone paint ATLAS FASTEL-NOVA
12. ATLAS SILTON S sanitary silicone
13. Sealing foam

STD-0008-0
Vertical Expansion
Joint

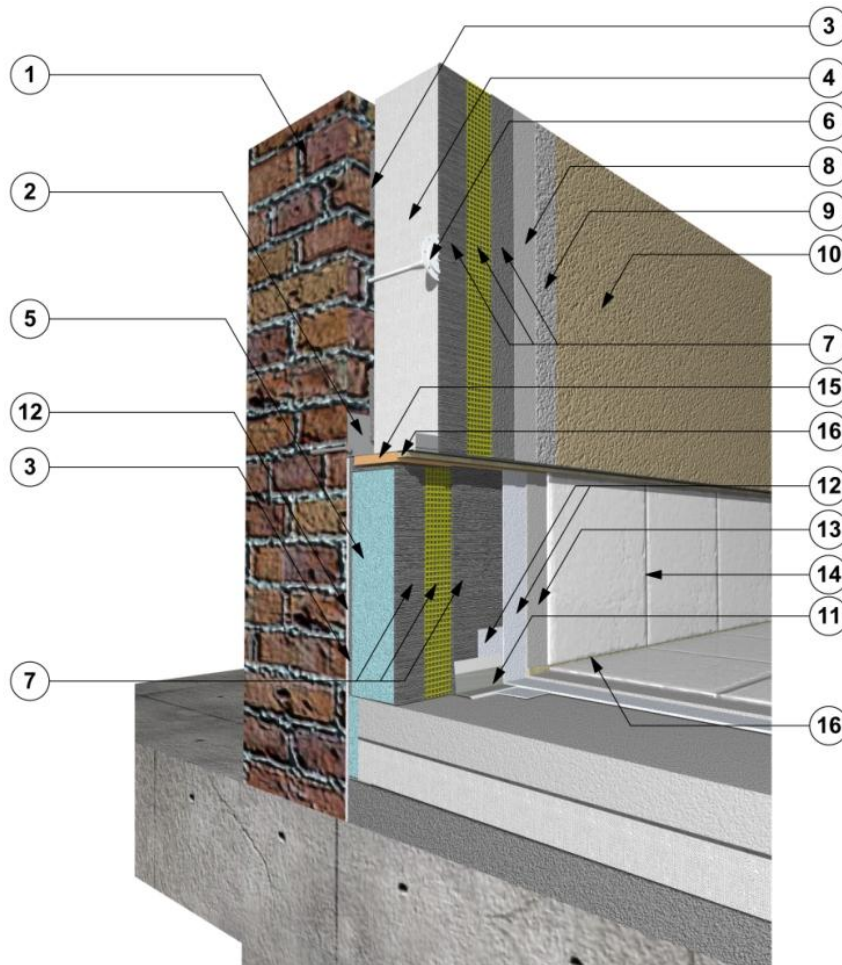
1. Figure 8.
2. Thermal Insulation Composite Systems ATLAS/AVAL
3. Detail scheme: Vertical expansion joint (with a straight expansion joint profile)



- | | |
|---|---|
| <ol style="list-style-type: none"> 1. Building structural expansion joint 2. Substrate 3. Insulation adhesive <ul style="list-style-type: none"> - ATLAS STOPTER K-10/AVAL KT 83 - ATLAS STOPTER K-20/AVAL KT 85 - ATLAS HOTER S/AVAL KT 53 - ATLAS HOTER U/AVAL KT 55 4. Thermal insulation <ul style="list-style-type: none"> - standard expanded polystyrene EPS - elastified expanded polystyrene EPS 5. Additional stripe of insulation 6. Straight expansion joint profile 7. Reinforced layer <ul style="list-style-type: none"> - Insulation adhesive ATLAS STOPTER K-20/AVAL KT 85 - Insulation adhesive ATLAS HOTER U/AVAL KT 55 - Glass fibre reinforcing mesh 8. Render primer <ul style="list-style-type: none"> - ATLAS CERPLAST/AVAL KT 16 (with mineral render ATLAS CERMIT/AVAL KT 35/AVAL KT 137 and acrylic render ATLAS CERMIT/AVAL KT 60/AVAL KT 64) | <ul style="list-style-type: none"> - ATLAS SILKAT ASX/AVAL KT 15 (with silicate render ATLAS SILKAT/AVAL KT 72/AVAL KT 73) - ATLAS SILKON ANX/AVAL KT 76 (with silicone render ATLAS SILKON/AVAL KT 74/AVAL KT 75) <ol style="list-style-type: none"> 9. Render coat <ul style="list-style-type: none"> - Mineral render ATLAS CERMIT/AVAL KT 35/AVAL KT 137 - Acrylic render ATLAS CERMIT/AVAL KT 60/AVAL KT 64 - Silicate render ATLAS SILKAT/AVAL KT 72/AVAL KT 73 - Silicone render ATLAS SILKON/AVAL KT 74/AVAL KT 75 10. Top paint coat (optional) <ul style="list-style-type: none"> - Acrylic paint ATLAS ARKOL E/AVAL KT 44 - Silicate paint ATLAS ARKOL S/AVAL KT 54 (with primer ATLAS ARKOL SX/AVAL KT 52) - Silicone paint ATLAS ARKOL N/AVAL KT 48 and ATLAS FASTEL/AVAL KT 46 (with primer ATLAS ARKOL NX/AVAL KT 47) - Silicone paint ATLAS FASTEL-NOVA |
|---|---|

STD-0009-0
Joint of Insulation
With Terrace

Figure 9.
Thermal Insulation Comp [redacted] AVAL
Detail scheme: Joint of external wall insulation with a terrace

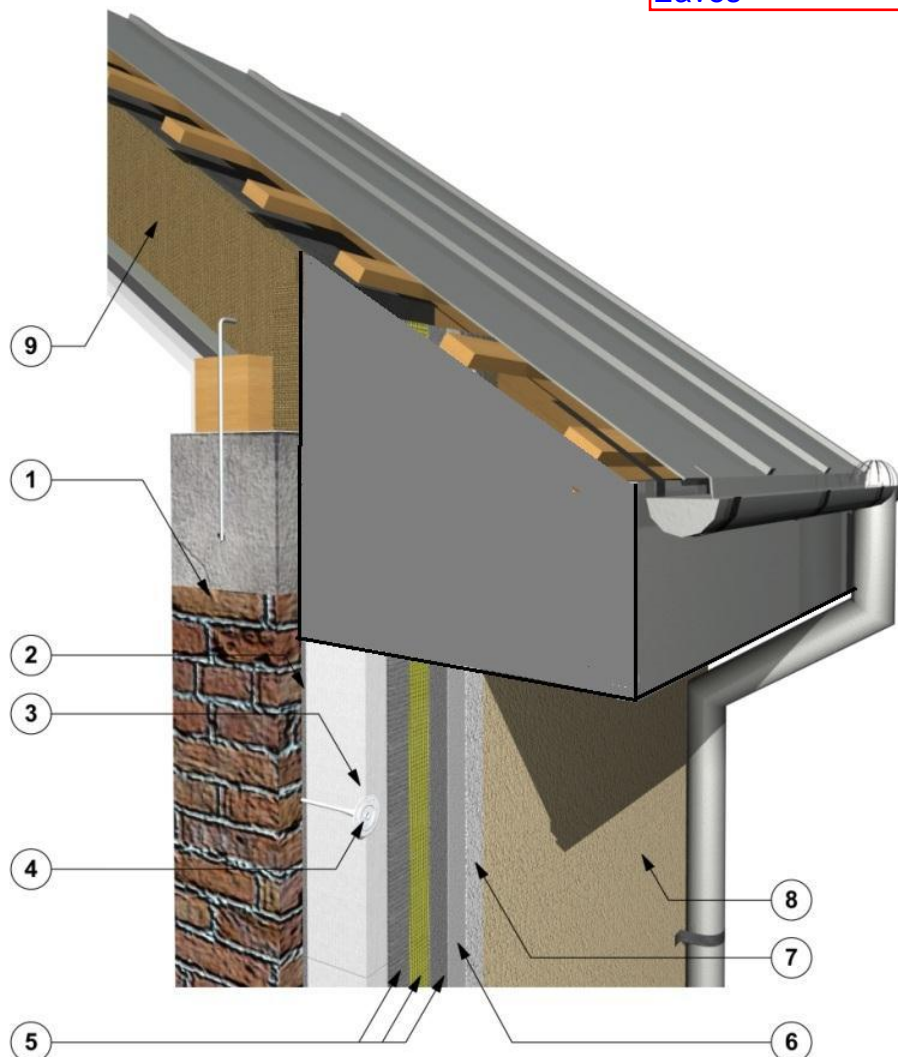


1. Substrate
2. Starter track
3. Insulation adhesive
 - ATLAS STOPTER K-10/AVAL KT 83
 - ATLAS STOPTER K-20/AVAL KT 85
 - ATLAS HOTER S/AVAL KT 53
 - ATLAS HOTER U/AVAL KT 55
4. Thermal insulation
 - standard expanded polystyrene EPS
 - elastified expanded polystyrene EPS
5. Thermal insulation
 - XPS or HD EPS
6. Anchor
7. Reinforced layer
 - Insulation adhesive ATLAS STOPTER K-20/AVAL KT 85
 - Insulation adhesive ATLAS HOTER U/AVAL KT 55
 - Glass fibre reinforcing mesh
8. Render primer
 - ATLAS CERPLAST/AVAL KT 16 (with mineral render ATLAS CERMIT/AVAL KT 35/AVAL KT 137 and acrylic render ATLAS CERMIT/AVAL KT 60/AVAL KT 64)
 - ATLAS SILKAT ASX/AVAL KT 15 (with silicate render ATLAS SILKAT/AVAL KT 72/AVAL KT 73)

- ATLAS SILKON ANX/AVAL KT 76 (with silicone render ATLAS SILKON/AVAL KT 74/AVAL KT 75)
9. Render coat
 - Mineral render ATLAS CERMIT/AVAL KT 35/AVAL KT 137
 - Acrylic render ATLAS CERMIT/AVAL KT 60/AVAL KT 64
 - Silicate render ATLAS SILKAT/AVAL KT 72/AVAL KT 73
 - Silicone render ATLAS SILKON/AVAL KT 74/AVAL KT 75
10. Top paint coat (optional)
 - Acrylic paint ATLAS ARKOL E/AVAL KT 44
 - Silicate paint ATLAS ARKOL S/AVAL KT 54 (with primer ATLAS ARKOL SX/AVAL KT 52)
 - Silicone paint ATLAS ARKOL N/AVAL KT 48 and ATLAS FASTEL/AVAL KT 46 (with primer ATLAS ARKOL NX/AVAL KT 47)
 - Silicone paint ATLAS FASTEL-NOVA
11. ATLAS/AVAL KL 152 sealing tape
12. ATLAS WODER E/AVAL KL 51 sealing layer
13. ATLAS PLUS/AVAL KM 17 adhesive mortar
14. ATLAS/ATLAS EXTRA/ATLAS ARTIS/AVAL EXTRA grout
15. Expanding tape
16. ATLAS SILTON S sanitary silicone

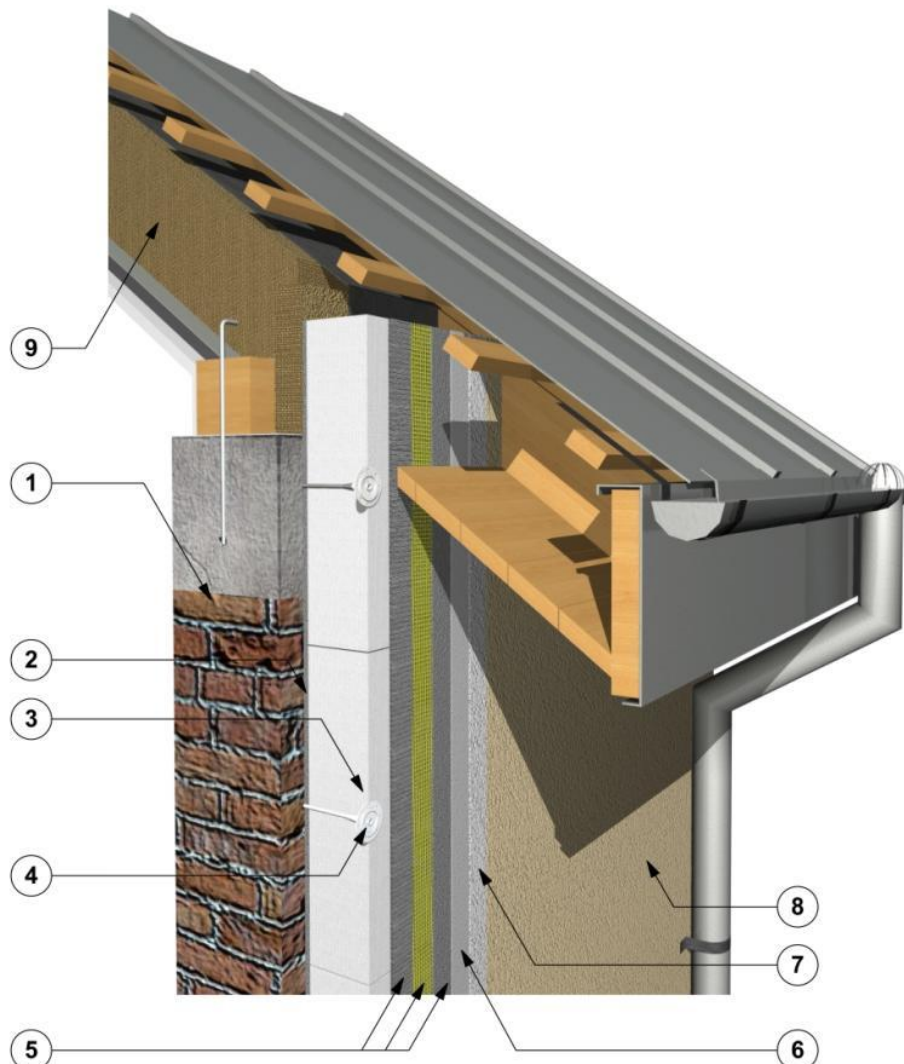
Figure 10a.
Thermal Insulation Composite Systems ATLAS/AVAL
Detail scheme: Wall insulation finishing at eaves

STD-0010a-0
Termination at
Eaves



1. Substrate
2. Insulation adhesive
 - ATLAS STOPTER K-10/AVAL KT 83
 - ATLAS STOPTER K-20/AVAL KT 85
 - ATLAS HOTER S/AVAL KT 53
 - ATLAS HOTER U/AVAL KT 55
3. Thermal insulation
 - standard expanded polystyrene EPS
 - elastified expanded polystyrene EPS
4. Anchor
5. Reinforced layer
 - Insulation adhesive ATLAS STOPTER K20/AVAL KT 85
 - Insulation adhesive ATLAS HOTER U/AVAL KT 55
 - Glass fibre reinforcing mesh
6. Render primer
 - ATLAS CERPLAST/AVAL KT 16 (with mineral render ATLAS CERMIT/AVAL KT 35/AVAL KT 137 and acrylic render ATLAS CERMIT/AVAL KT 60/AVAL KT 64)
 - ATLAS SILKAT ASX/AVAL KT 15 (with silicate render ATLAS SILKAT/AVAL KT 72/AVAL KT 73)
 - ATLAS SILKON ANX/AVAL KT 76 (with silicone render ATLAS SILKON/AVAL KT 74/AVAL KT 75)
7. Render coat
 - Mineral render ATLAS CERMIT/AVAL KT 35/AVAL KT 137
 - Acrylic render ATLAS CERMIT/AVAL KT 60/AVAL KT 64
 - Silicate render ATLAS SILKAT/AVAL KT 72/AVAL KT 73
 - Silicone render ATLAS SILKON/AVAL KT 74/AVAL KT 75
8. Top paint coat (optional)
 - Acrylic paint ATLAS ARKOL E/AVAL KT 44
 - Silicate paint ATLAS ARKOL S/AVAL KT 54 (with primer ATLAS ARKOL SX/AVAL KT 52)
 - Silicone paint ATLAS ARKOL N/AVAL KT 48 and ATLAS FASTEL/AVAL KT 46 (with primer ATLAS ARKOL NX/AVAL KT 47)
 - Silicone paint ATLAS FASTEL-NOVA
9. Roof insulation

Figure 10b.
Thermal Insulation Composite Systems ATLAS/AVAL
Detail scheme: Wall insulation finishing above eaves

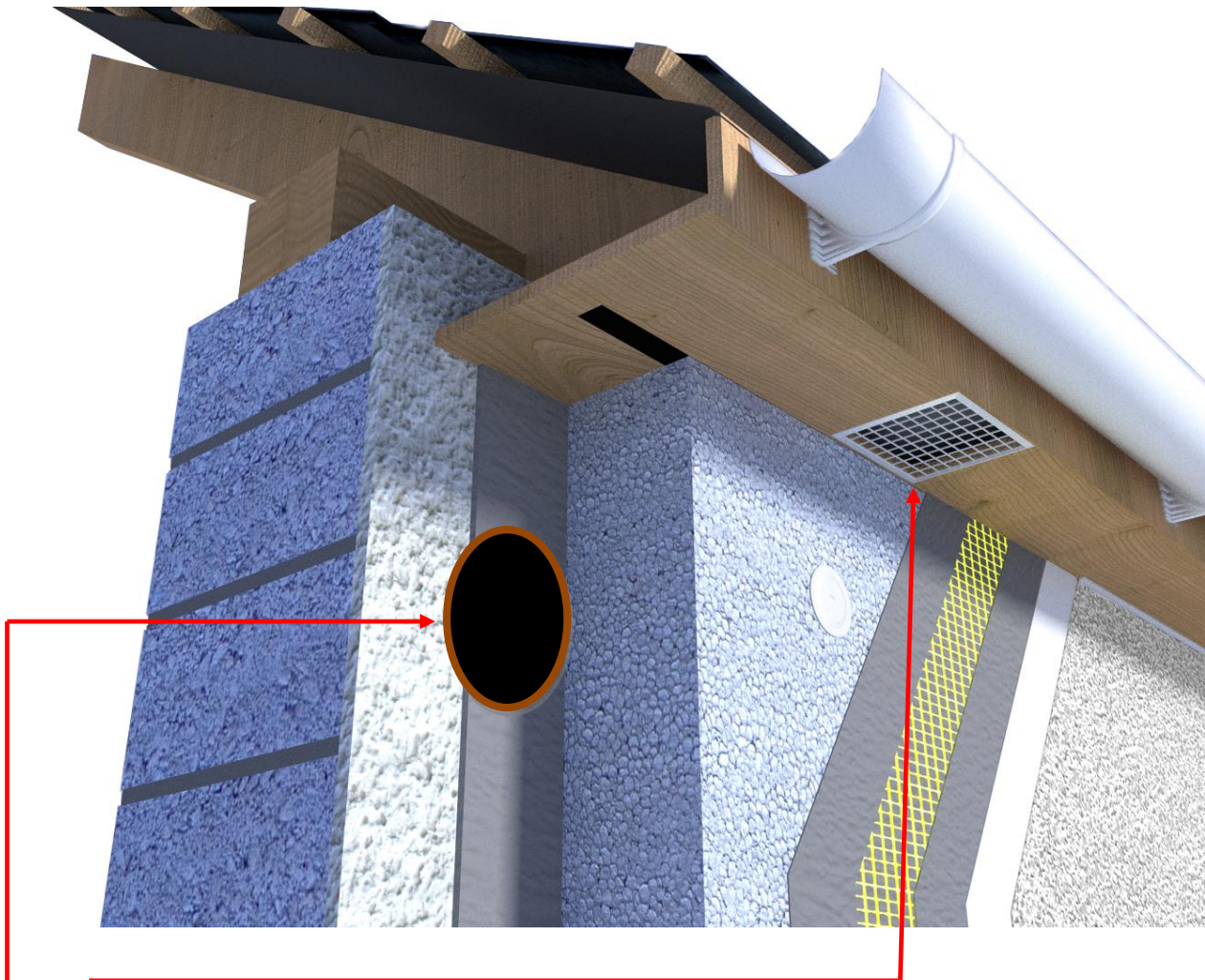


- | | |
|--|--|
| <ol style="list-style-type: none"> 1. Substrate 2. Insulation adhesive <ul style="list-style-type: none"> - ATLAS STOPTER K-10/AVAL KT 83 - ATLAS STOPTER K-20/AVAL KT 85 - ATLAS HOTER S/AVAL KT 53 - ATLAS HOTER U/AVAL KT 55 3. Thermal insulation <ul style="list-style-type: none"> - standard expanded polystyrene EPS - elastified expanded polystyrene EPS 4. Anchor 5. Reinforced layer <ul style="list-style-type: none"> - Insulation adhesive ATLAS STOPTER K20/AVAL KT 85 - Insulation adhesive ATLAS HOTER U/AVAL KT 55 - Glass fibre reinforcing mesh 6. Render primer <ul style="list-style-type: none"> - ATLAS CERPLAST/AVAL KT 16 (with mineral render ATLAS CERMIT/AVAL KT 35/AVAL KT 137 and acrylic render ATLAS CERMIT/AVAL KT 60/AVAL KT 64) | <ul style="list-style-type: none"> - ATLAS SILKAT ASX/AVAL KT 15 (with silicate render ATLAS SILKAT/AVAL KT 72/AVAL KT 73) - ATLAS SILKON ANX/AVAL KT 76 (with silicone render ATLAS SILKON/AVAL KT 74/AVAL KT 75) <ol style="list-style-type: none"> 7. Render coat <ul style="list-style-type: none"> - Mineral render ATLAS CERMIT/AVAL KT 35/AVAL KT 137 - Acrylic render ATLAS CERMIT/AVAL KT 60/AVAL KT 64 - Silicate render ATLAS SILKAT/AVAL KT 72/AVAL KT 73 - Silicone render ATLAS SILKON/AVAL KT 74/AVAL KT 75 8. Top paint coat (optional) <ul style="list-style-type: none"> - Acrylic paint ATLAS ARKOL E/AVAL KT 44 - Silicate paint ATLAS ARKOL S/AVAL KT 54 (with primer ATLAS ARKOL SX/AVAL KT 52) - Silicone paint ATLAS ARKOL N/AVAL KT 48 and ATLAS FASTEL/AVAL KT 46 (with primer ATLAS ARKOL NX/AVAL KT 47) - Silicone paint ATLAS FASTEL-NOVA 9. Roof insulation |
|--|--|

Figure 10c.

Thermal Insulation Composite Systems ATLAS/AVAL

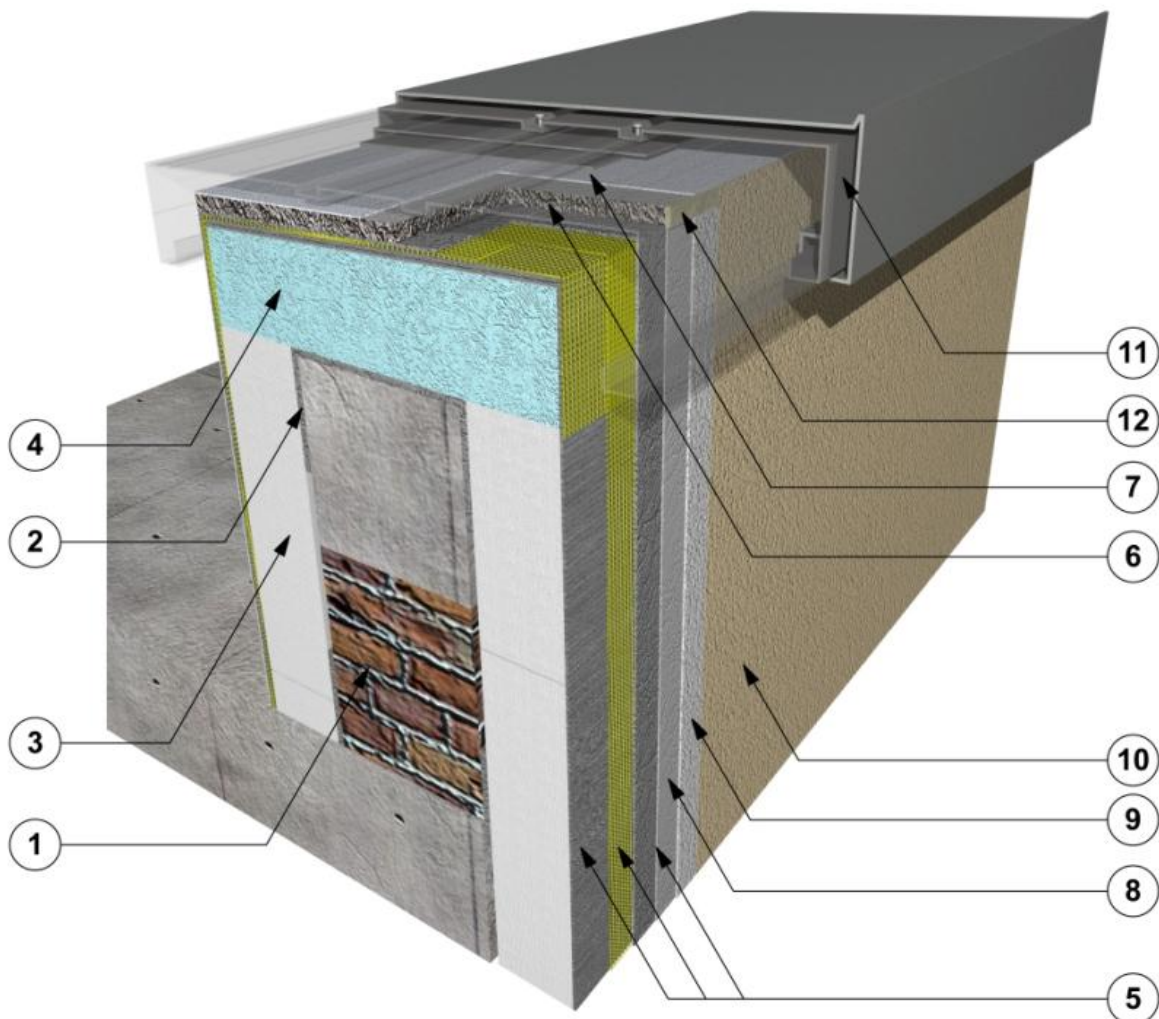
Detail scheme: Wall insulation finishing at eaves with ventilation in soffit and external wall



1. Ventilation in soffit. Any ventilation covered by insulation must be replaced. 10,000mm² of ventilation per linear meter is required.
2. Wall ventilation. 6,500 mm² (~4inch core or adequately sized window vents) must be added to the external wall of all habitable rooms. Additionally if there is a solid fuel appliance a permanent air entry or opening with a total free area of at least 550 mm² per kW of rated output above 5 kW shall be provided but in no case less than. Ventilation to be carried through insulation and have a vent cover.

Figure 11.
Thermal Insulation Composite Systems ATLAS/AVAL
Detail scheme: Flat roof attic insulation

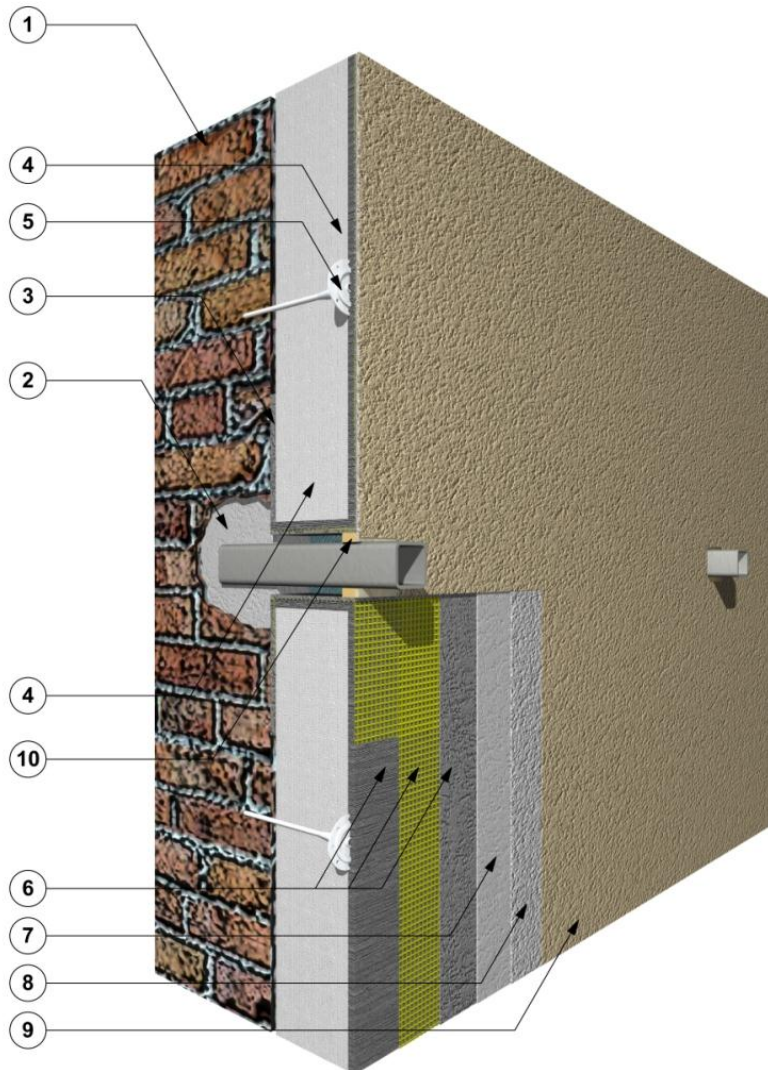
STD-011-0
Flat Roof



1. Substrate
2. Insulation adhesive
 - ATLAS STOPTER K-10/AVAL KT 83
 - ATLAS STOPTER K-20/AVAL KT 85
 - ATLAS HOTER S/AVAL KT 53
 - ATLAS HOTER U/AVAL KT 55
3. Thermal insulation
 - standard expanded polystyrene EPS
 - elastified expanded polystyrene EPS
4. Thermal insulation
 - extruded polystyrene XPS
5. Reinforced layer
 - Insulation adhesive ATLAS STOPTER K-20/AVAL KT 85
 - Insulation adhesive ATLAS HOTER U/AVAL KT 55
 - Glass fibre reinforcing mesh
6. Cement fibre board
7. ATLAS WODER E/AVAL KL 51 sealing layer
8. Render primer
 - ATLAS CERPLAST/AVAL KT 16 (with mineral render ATLAS CERMIT/AVAL KT 35/AVAL KT 137 and acrylic render ATLAS CERMIT/AVAL KT 60/AVAL KT 64)

- ATLAS SILKAT ASX/AVAL KT 15 (with silicate render ATLAS SILKAT/AVAL KT 72/AVAL KT 73)
- ATLAS SILKON ANX/AVAL KT 76 (with silicone render ATLAS SILKON/AVAL KT 74/AVAL KT 75)
- 9. Render coat
 - Mineral render ATLAS CERMIT/AVAL KT 35/AVAL KT 137
 - Acrylic render ATLAS CERMIT/AVAL KT 60/AVAL KT 64
 - Silicate render ATLAS SILKAT/AVAL KT 72/AVAL KT 73
 - Silicone render ATLAS SILKON/AVAL KT 74/AVAL KT 75
- 10. Top paint coat (optional)
 - Acrylic paint ATLAS ARKOL E/AVAL KT 44
 - Silicate paint ATLAS ARKOL S/AVAL KT 54 (with primer ATLAS ARKOL SX/AVAL KT 52)
 - Silicone paint ATLAS ARKOL N/AVAL KT 48 and ATLAS FASTEL/AVAL KT 46 (with primer ATLAS ARKOL NX/AVAL KT 47)
 - Silicone paint ATLAS FASTEL-NOVA
- 11. Flashing
- 12. ATLAS SILTON S sanitary silicone

Figure 12.
Thermal Insulation Composite Systems ATLAS/AVAL
Detail scheme: Anchoring of a structural element through the external insulation system (e.g. railing)

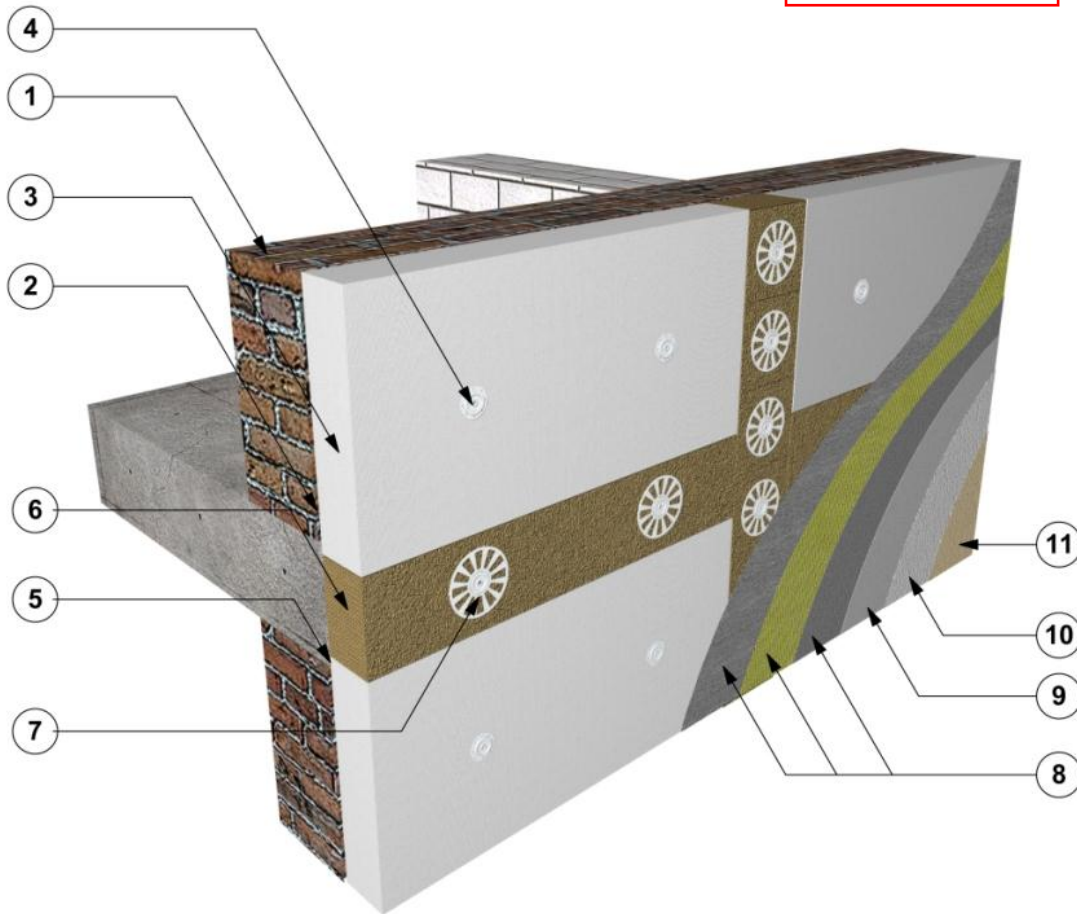


1. Substrate
2. ATLAS MONTER assembly mortar
3. Insulation adhesive
 - ATLAS STOPTER K-10/AVAL KT 83
 - ATLAS STOPTER K-20/AVAL KT 85
 - ATLAS HOTER S/AVAL KT 53
 - ATLAS HOTER U/AVAL KT 55
4. Thermal insulation
 - standard expanded polystyrene EPS
 - elastified expanded polystyrene EPS
5. Anchor
6. Reinforced layer
 - Insulation adhesive ATLAS STOPTER K-20/AVAL KT 85
 - Insulation adhesive ATLAS HOTER U/AVAL KT 55
7. Render primer
 - ATLAS CERPLAST/AVAL KT 16 (with mineral render ATLAS CERMIT/AVAL KT 35/AVAL KT 137 and acrylic render ATLAS CERMIT/AVAL KT 60/AVAL KT 64)

- ATLAS SILKAT ASX/AVAL KT 15 (with silicate render ATLAS SILKAT/AVAL KT 72/AVAL KT 73)
- ATLAS SILKON ANX/AVAL KT 76 (with silicone render ATLAS SILKON/AVAL KT 74/AVAL KT 75)
- 8. Render coat
 - Mineral render ATLAS CERMIT/AVAL KT 35/AVAL KT 137
 - Acrylic render ATLAS CERMIT/AVAL KT 60/AVAL KT 64
 - Silicate render ATLAS SILKAT/AVAL KT 72/AVAL KT 73
 - Silicone render ATLAS SILKON/AVAL KT 74/AVAL KT 75
- 9. Top paint coat (optional)
 - Acrylic paint ATLAS ARKOL E/AVAL KT 44
 - Silicate paint ATLAS ARKOL S/AVAL KT 54 (with primer ATLAS ARKOL SX/AVAL KT 52)
 - Silicone paint ATLAS ARKOL N/AVAL KT 48 and ATLAS FASTEL/AVAL KT 46 (with primer ATLAS ARKOL NX/AVAL KT 47)
 - Silicone paint ATLAS FASTEL-NOVA
- 10. ATLAS SILTON S sanitary silicone

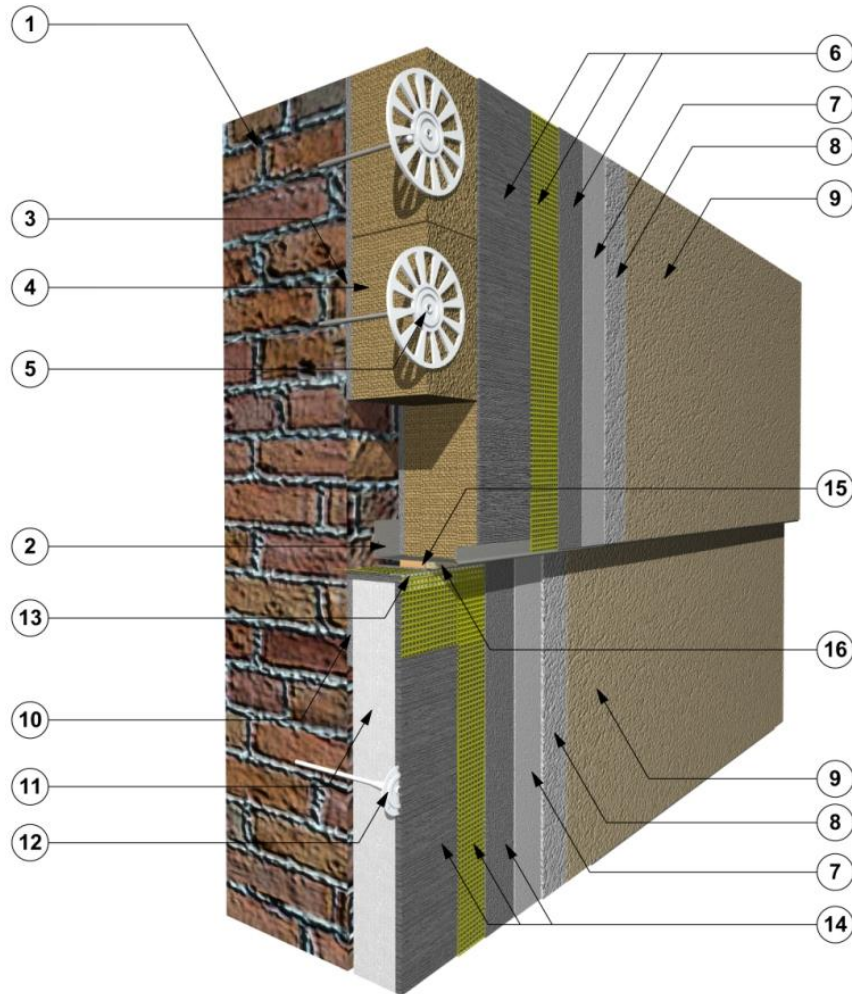
Figure 13.
Thermal Insulation Composite Systems ATLAS/AVAL
Detail scheme: Installation of vertical and horizontal fire barriers

STD-013-0
Vertical Horizontal
Fire Barriers



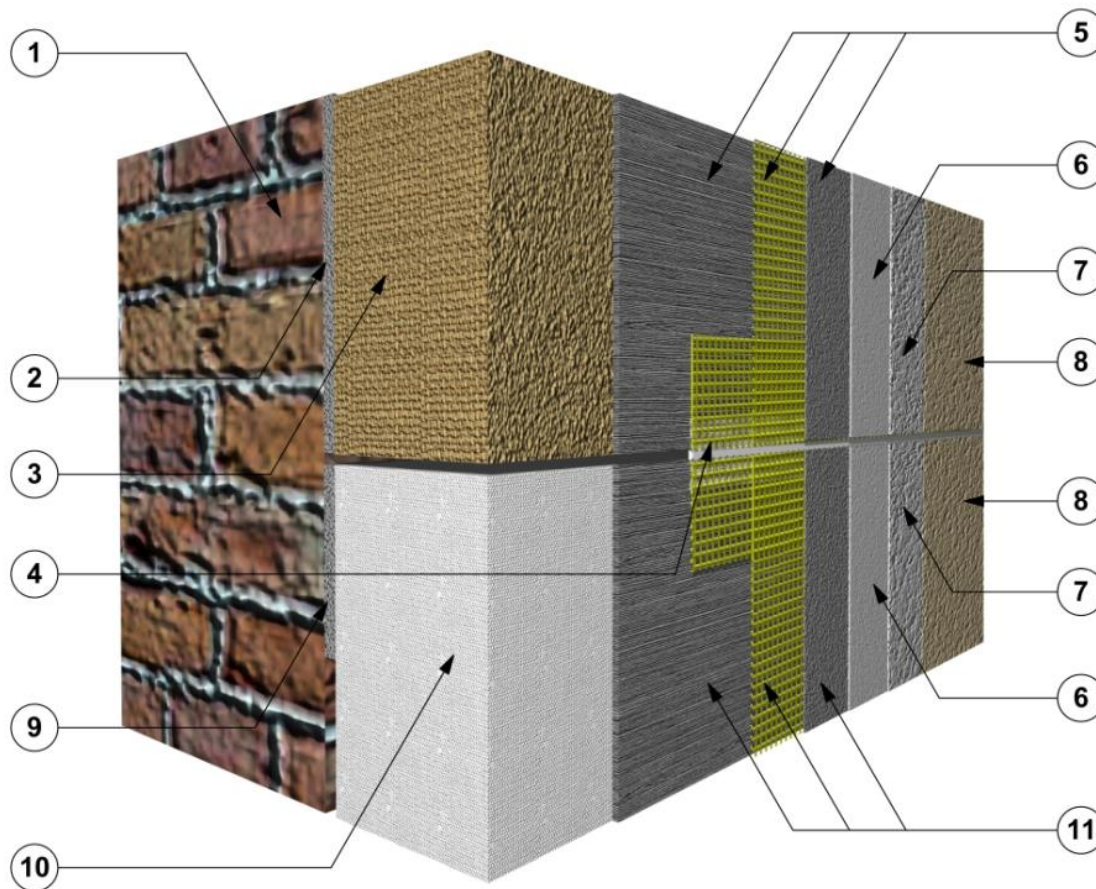
1. Substrate
2. Insulation adhesive (EPS)
 - ATLAS STOPTER K-10/AVAL KT 83
 - ATLAS STOPTER K-20/AVAL KT 85
 - ATLAS HOTER S/AVAL KT 53
 - ATLAS HOTER U/AVAL KT 55
3. Thermal insulation
 - standard expanded polystyrene EPS
 - elastified expanded polystyrene EPS
4. Anchors (with hammer in steel or nylon pin)
5. Thermal Insulation adhesive (mineral wool boards)
 - ATLAS ROKER W-20/AVAL KT 190
6. Thermal insulation
 - lamella fire break
7. Anchor stainless steel fire fixing
8. Reinforced layer
 - Insulation adhesive ATLAS STOPTER K-20/AVAL KT 85
 - Glass fibre reinforcing mesh
9. Render primer
 - ATLAS CERPLAST/AVAL KT 16 (with mineral render ATLAS CERMIT/AVAL KT 35/AVAL KT 137)
 - ATLAS SILKAT ASX/AVAL KT 15 (with silicate render ATLAS SILKAT/AVAL KT 72/AVAL KT 73)
 - ATLAS SILKON ANX/AVAL KT 76 (with silicone render ATLAS SILKON/AVAL KT 74/AVAL KT 75)
10. Render coat
 - Mineral render ATLAS CERMIT/AVAL KT 35/AVAL KT 137
 - Silicate render ATLAS SILKAT/AVAL KT 72/AVAL KT 73
 - Silicone render ATLAS SILKON/AVAL KT 74/AVAL KT 75
11. Top paint coat (optional)
 - Silicate paint ATLAS ARKOL S/AVAL KT 54 (with primer ATLAS ARKOL SX/AVAL KT 52)
 - Silicone paint ATLAS ARKOL N/AVAL KT 48 and ATLAS FASTEL/AVAL KT 46 (with primer ATLAS ARKOL NX/AVAL KT 47)
 - Silicone paint ATLAS FASTEL-NOVA

Figure 14
Thermal Insulation Composite Systems ATLAS/AVAL
Detail scheme: Joint of the EPS-based insulation system with the mineral wool – based insulation system



- | | |
|--|--|
| <ol style="list-style-type: none"> 1. Substrate 2. Starter track 3. Insulation adhesive (mineral wool boards)
- ATLAS ROKER W-20/AVAL KT 190 4. Thermal insulation
- mineral wool (MW) 5. Anchors (with hammer in steel pin) 6. Reinforced layer
- Insulation adhesive ATLAS ROKER W-20/AVAL KT 190
- Glass fibre reinforcing mesh 7. Render primer
- ATLAS CERPLAST/AVAL KT 16 (with mineral render ATLAS CERMIT/AVAL KT 35/AVAL KT 137)
- ATLAS SILKAT ASX/AVAL KT 15 (with silicate render ATLAS SILKAT/AVAL KT 72/AVAL KT 73)
- ATLAS SILKON ANX/AVAL KT 76 (with silicone render ATLAS SILKON/AVAL KT 74/AVAL KT 75) 8. Render coat
- Mineral render ATLAS CERMIT/AVAL KT 35/AVAL KT 137
- Acrylic render ATLAS CERMIT/AVAL KT 60/AVAL KT 64 (NOTE: Do not use with mineral wool system)
- Silicate render ATLAS SILKAT/AVAL KT 72/AVAL KT 73 | <ul style="list-style-type: none"> - Silicone render ATLAS SILKON/AVAL KT 74/AVAL KT 75 9. Top paint coat (optional)
- Silicate paint ATLAS ARKOL S/AVAL KT 54 (with primer ATLAS ARKOL SX/AVAL KT 52)
- Silicone paint ATLAS ARKOL N/AVAL KT 48 and ATLAS FASTEL/AVAL KT 46 (with primer ATLAS ARKOL NX/AVAL KT 47)
- Silicone paint ATLAS FASTEL-NOVA 10. Insulation adhesive (EPS)
- ATLAS STOPTER K-10/AVAL KT 83
- ATLAS STOPTER K-20/AVAL KT 85
- ATLAS HOTER S/AVAL KT 53
- ATLAS HOTER U/AVAL KT 55 11. Thermal insulation
- standard expanded polystyrene EPS
- elastified expanded polystyrene EPS 12. Anchor (with hammer in steel or nylon pin) 13. Corner profile with mesh 14. Reinforced layer
- Insulation adhesive ATLAS STOPTER K-20/AVAL KT 85
- Insulation adhesive ATLAS HOTER U/AVAL KT 55
- Glass fibre reinforcing mesh 15. Expanding tape 16. ATLAS SILTON S sanitary silicone |
|--|--|

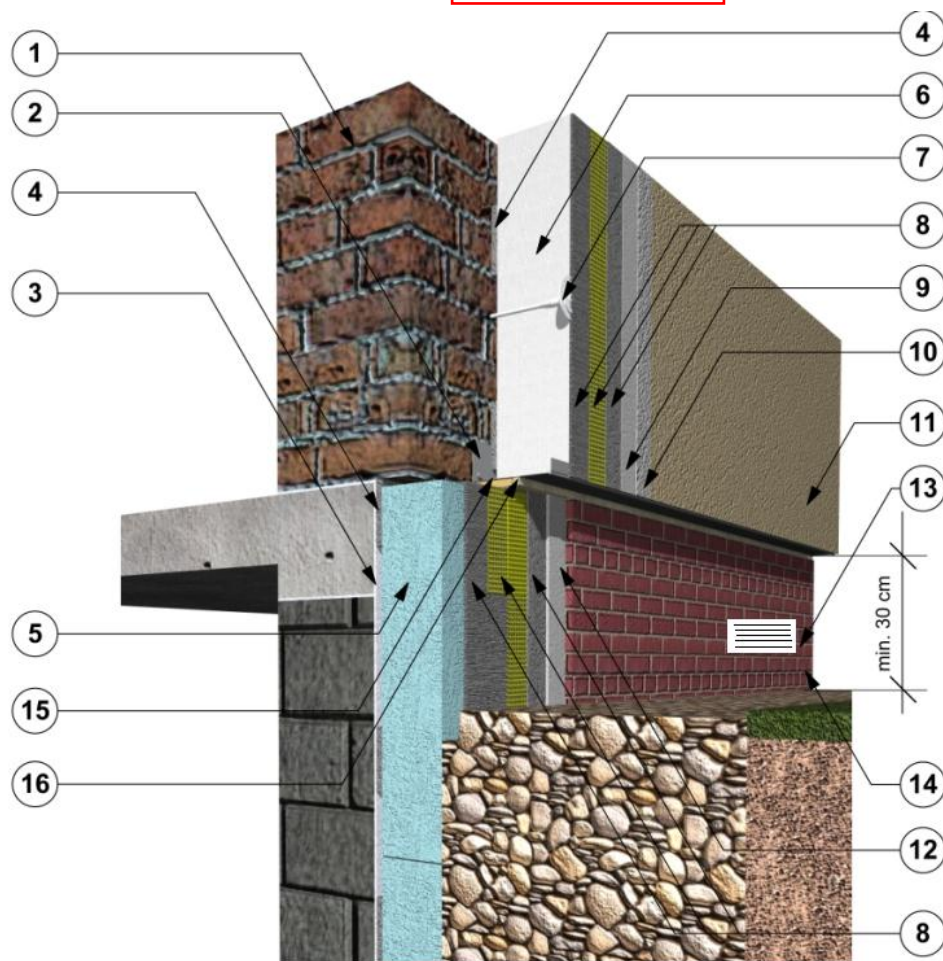
Figure 15
 Thermal Insulation Composite Systems ATLAS/AVAL
 Detail scheme: Joint of the EPS-based insulation system with the mineral wool – based insulation system (with an expansion joint profile)



- | | |
|---|--|
| <ol style="list-style-type: none"> 1. Substrate 2. Insulation adhesive (mineral wool boards) <ul style="list-style-type: none"> - ATLAS ROKER W-20/AVAL KT 190 3. Thermal insulation <ul style="list-style-type: none"> - mineral wool MW 4. Expansion joint profile 5. Reinforced layer <ul style="list-style-type: none"> - Insulation adhesive ATLAS ROKER W-20/AVAL KT 190 - Glass fibre reinforcing mesh 6. Render primer <ul style="list-style-type: none"> - ATLAS CERPLAST/AVAL KT 16 (with mineral render ATLAS CERMIT/AVAL KT 35/AVAL KT 137) - ATLAS SILKAT ASX/AVAL KT 15 (with silicate render ATLAS SILKAT/AVAL KT 72/AVAL KT 73) - ATLAS SILKON ANX/AVAL KT 76 (with silicone render ATLAS SILKON/AVAL KT 74/AVAL KT 75) 7. Render coat <ul style="list-style-type: none"> - Mineral render ATLAS CERMIT/AVAL KT 35/AVAL KT 137 - Acrylic render ATLAS CERMIT/AVAL KT 60/AVAL KT 64 (NOTE: Do not use with mineral wool system) - Silicate render ATLAS SILKAT/AVAL KT 72/AVAL KT 73 | <ul style="list-style-type: none"> - - Silicone render ATLAS SILKON/AVAL KT 74/AVAL KT 75 8. Top paint coat (optional) <ul style="list-style-type: none"> - Silicate paint ATLAS ARKOL S/AVAL KT 54 (with primer ATLAS ARKOL SX/AVAL KT 52) - Silicone paint ATLAS ARKOL N/AVAL KT 48 and ATLAS FASTEL/AVAL KT 46 (with primer ATLAS ARKOL NX/AVAL KT 47) - Silicone paint ATLAS FASTEL-NOVA 9. Insulation adhesive (EPS) <ul style="list-style-type: none"> - ATLAS STOPTER K-10/AVAL KT 83 - ATLAS STOPTER K-20/AVAL KT 85 - ATLAS HOTER S/AVAL KT 53 - ATLAS HOTER U/AVAL KT 55 10. Thermal insulation <ul style="list-style-type: none"> - standard expanded polystyrene EPS - elastified expanded polystyrene EPS 11. Reinforced layer <ul style="list-style-type: none"> - Insulation adhesive ATLAS STOPTER K-20/AVAL KT 85 - Insulation adhesive ATLAS HOTER U/AVAL KT 55 <ul style="list-style-type: none"> - Glass fibre reinforcing mesh |
|---|--|

Figure 16 Subfloor vent

**STD-016-0
Subfloor Vent**

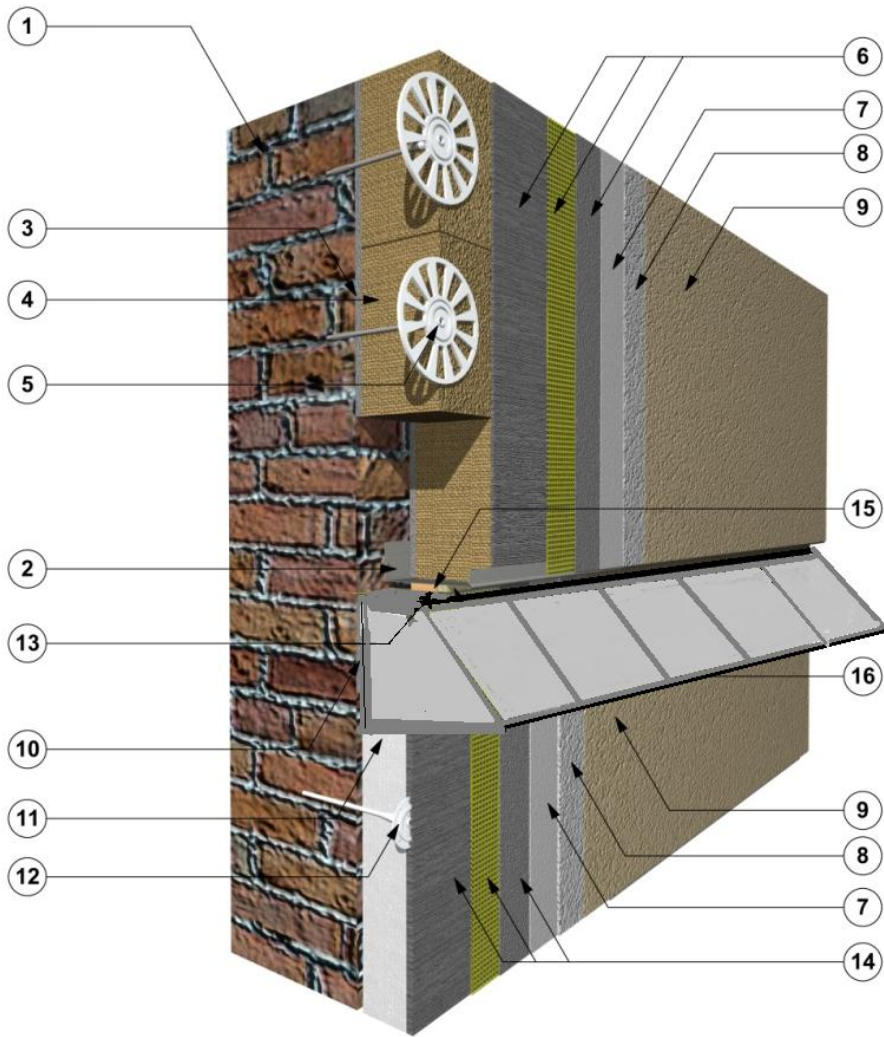


1. Substrate
2. Starter track
3. ATLAS WODER E/AVAL KL 51 sealing layer
4. Insulation adhesive
 - ATLAS STOPTER K-10/AVAL KT 83
 - ATLAS STOPTER K-20/AVAL KT 85
 - ATLAS HOTER S/AVAL KT 53
 - ATLAS HOTER U/AVAL KT 55
5. Thermal insulation
 - extruded polystyrene XPS
6. Thermal insulation
 - standard expanded polystyrene EPS
 - elastified expanded polystyrene EPS
7. Anchor
8. Reinforced layer
 - Insulation adhesive ATLAS STOPTER K-20/AVAL KT 85
 - Insulation adhesive ATLAS HOTER U/AVAL KT 55
 - Glass fibre reinforcing mesh
9. Render primer
 - ATLAS CERPLAST/AVAL KT 16 (with mineral render ATLAS CERMIT/AVAL KT 35/AVAL KT 137 and acrylic render ATLAS CERMIT/AVAL KT 60/AVAL KT 64)
 - ATLAS SILKAT ASX/AVAL KT 15 (with silicate render ATLAS SILKAT/AVAL KT 72/AVAL KT 73)
 - ATLAS SILKON ANX/AVAL KT 76 (with silicone render ATLAS SILKON/AVAL KT 74/AVAL KT 75)

10. Render coat
 - Mineral render ATLAS CERMIT/AVAL KT 35/AVAL KT 137
 - Acrylic render ATLAS CERMIT/AVAL KT 60/AVAL KT 64
 - Silicate render ATLAS SILKAT/AVAL KT 72/AVAL KT 73
 - Silicone render ATLAS SILKON/AVAL KT 74/AVAL KT 75
11. Top paint coat (optional)
 - Acrylic paint ATLAS ARKOL E/AVAL KT 44
 - Silicate paint ATLAS ARKOL S/AVAL KT 54 (with primer ATLAS ARKOL SX/AVAL KT 52)
 - Silicone paint ATLAS ARKOL N/AVAL KT 48 and ATLAS FASTEL/AVAL KT 46 (with primer ATLAS ARKOL NX/AVAL KT 47)
 - Silicone paint ATLAS FASTEL-NOVA
12. ATLAS PLUS/AVAL KM 17 adhesive
13. Subfloor vent covering; breakout old vent.
14. ATLAS/ATLAS EXTRA/ATLAS ARTIS/AVAL EXTRA grout
15. Expanding tape
16. ATLAS SILTON S sanitary silicone

Figure 17 Pitched (or flat) Roof with base track used to separate

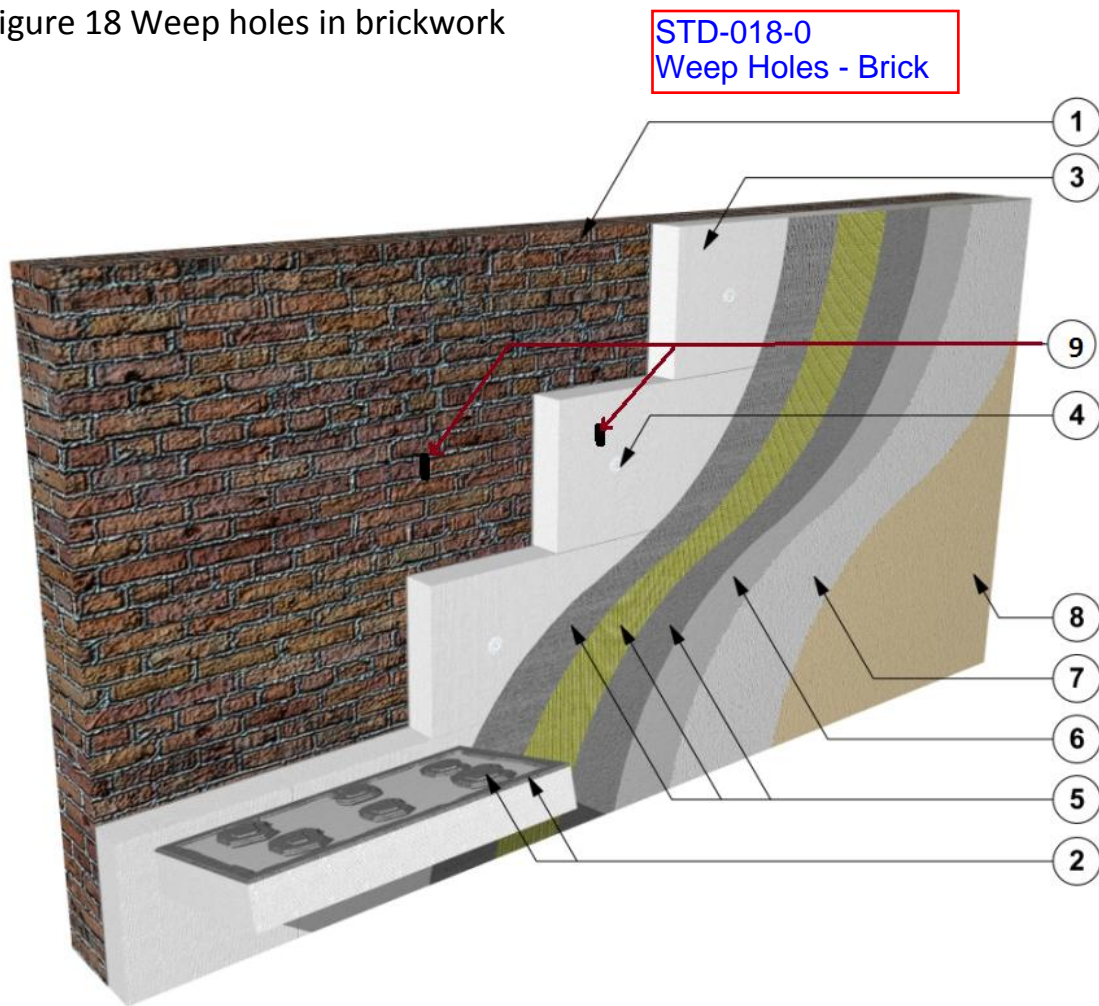
**STD-017-0
Pitched Roof**



1. Substrate
2. Starter track
3. Insulation adhesive (mineral wool boards)
- ATLAS ROKER W-20/AVAL KT 190
4. Thermal insulation
- mineral wool (MW)
5. Anchors (with hammer in steel pin)
6. Reinforced layer
- Insulation adhesive ATLAS ROKER W-20/AVAL KT 190
- Glass fibre reinforcing mesh
7. Render primer
- ATLAS CERPLAST/AVAL KT 16 (with mineral render ATLAS CERMIT/AVAL KT 35/AVAL KT 137)
- ATLAS SILKAT ASX/AVAL KT 15 (with silicate render ATLAS SILKAT/AVAL KT 72/AVAL KT 73)
- ATLAS SILKON ANX/AVAL KT 76 (with silicone render ATLAS SILKON/AVAL KT 74/AVAL KT 75)
8. Render coat
- Mineral render ATLAS CERMIT/AVAL KT 35/AVAL KT 137
- Acrylic render ATLAS CERMIT/AVAL KT 60/AVAL KT 64 (NOTE: Do not use with mineral wool system)

- Silicate render ATLAS SILKAT/AVAL KT 72/AVAL KT 73
- Silicone render ATLAS SILKON/AVAL KT 74/AVAL KT 75
- 9. Top paint coat (optional)
- Silicate paint ATLAS ARKOL S/AVAL KT 54 (with primer ATLAS ARKOL SX/AVAL KT 52)
- Silicone paint ATLAS ARKOL N/AVAL KT 48 and ATLAS FASTEL/AVAL KT 46 (with primer ATLAS ARKOL NX/AVAL KT 47)
- Silicone paint ATLAS FASTEL-NOVA
- 10. Pitched roof
- 11. Thermal insulation
- standard expanded polystyrene EPS
- elastified expanded polystyrene EPS
- 12. Anchor (with hammer in steel or nylon pin)
- 13. Lead flashing
- 14. Reinforced layer
- Insulation adhesive ATLAS STOPTER K-20/AVAL KT 85
- Insulation adhesive ATLAS HOTER U/AVAL KT 55
- Glass fibre reinforcing mesh
- 15. Expanding tape
- 16. ATLAS SILTON S sanitary silicone or polymer sealant

Figure 18 Weep holes in brickwork



1. Substrate
2. Insulation adhesive
 - ATLAS STOPTER K-10/AVAL KT 83
 - ATLAS STOPTER K-20/AVAL KT 85
 - ATLAS HOTER S/AVAL KT 53
 - ATLAS HOTER U/AVAL KT 55
3. Thermal insulation
 - standard expanded polystyrene EPS
 - elastified expanded polystyrene EPS
4. Anchor
5. Reinforced layer
 - Insulation adhesive ATLAS STOPTER K-20/AVAL KT 85
 - Insulation adhesive ATLAS HOTER U/AVAL KT 55
 - Glass fibre reinforcing mesh
6. Render primer
 - ATLAS CERPLAST/AVAL KT 16 (with mineral render ATLAS CERMIT/AVAL KT 35/AVAL KT 137 and acrylic render ATLAS CERMIT/AVAL KT 60/AVAL KT 64)
 - ATLAS SILKAT ASX/AVAL KT 15 (with silicate render ATLAS SILKAT/AVAL KT 72/AVAL KT 73)

- ATLAS SILKON ANX/AVAL KT 76 (with silicone render ATLAS SILKON/AVAL KT 74/AVAL KT 75)
- 7. Render coat
 - Mineral render ATLAS CERMIT/AVAL KT 35/AVAL KT 137
 - Acrylic render ATLAS CERMIT/AVAL KT 60/AVAL KT 64
 - Silicate render ATLAS SILKAT/AVAL KT 72/AVAL KT 73
 - Silicone render ATLAS SILKON/AVAL KT 74/AVAL KT 75
- 8. Top paint coat (optional)
 - Acrylic paint ATLAS ARKOL E/AVAL KT 44
 - Silicate paint ATLAS ARKOL S/AVAL KT 54 (with primer ATLAS ARKOL SX/AVAL KT 52)
 - Silicone paint ATLAS ARKOL N/AVAL KT 48 and ATLAS FASTEL/AVAL KT 46 (with primer ATLAS ARKOL NX/AVAL KT 47)
 - Silicone paint ATLAS FASTEL-NOVA

9. Weep holes in brick work must protrude through insulation layers

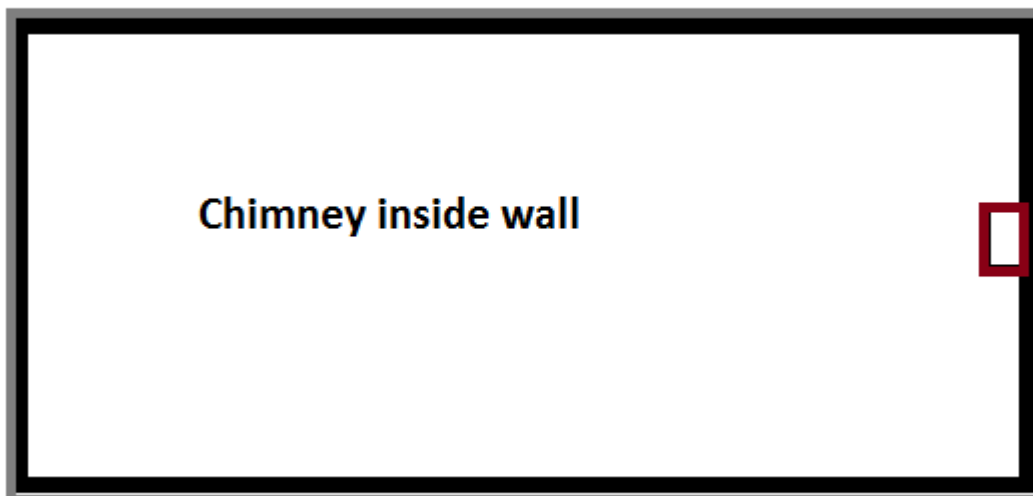
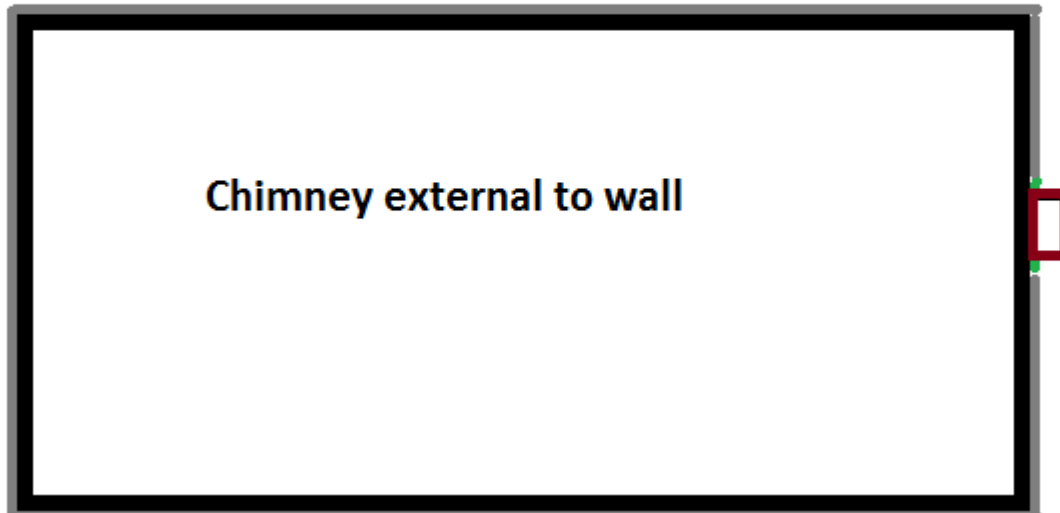
Figure 19 Chimney breast insulation

STD-019-0
Chimney Breast

Chimney

EPS Insulation

MW Fire barrier



Standard Detail 19A

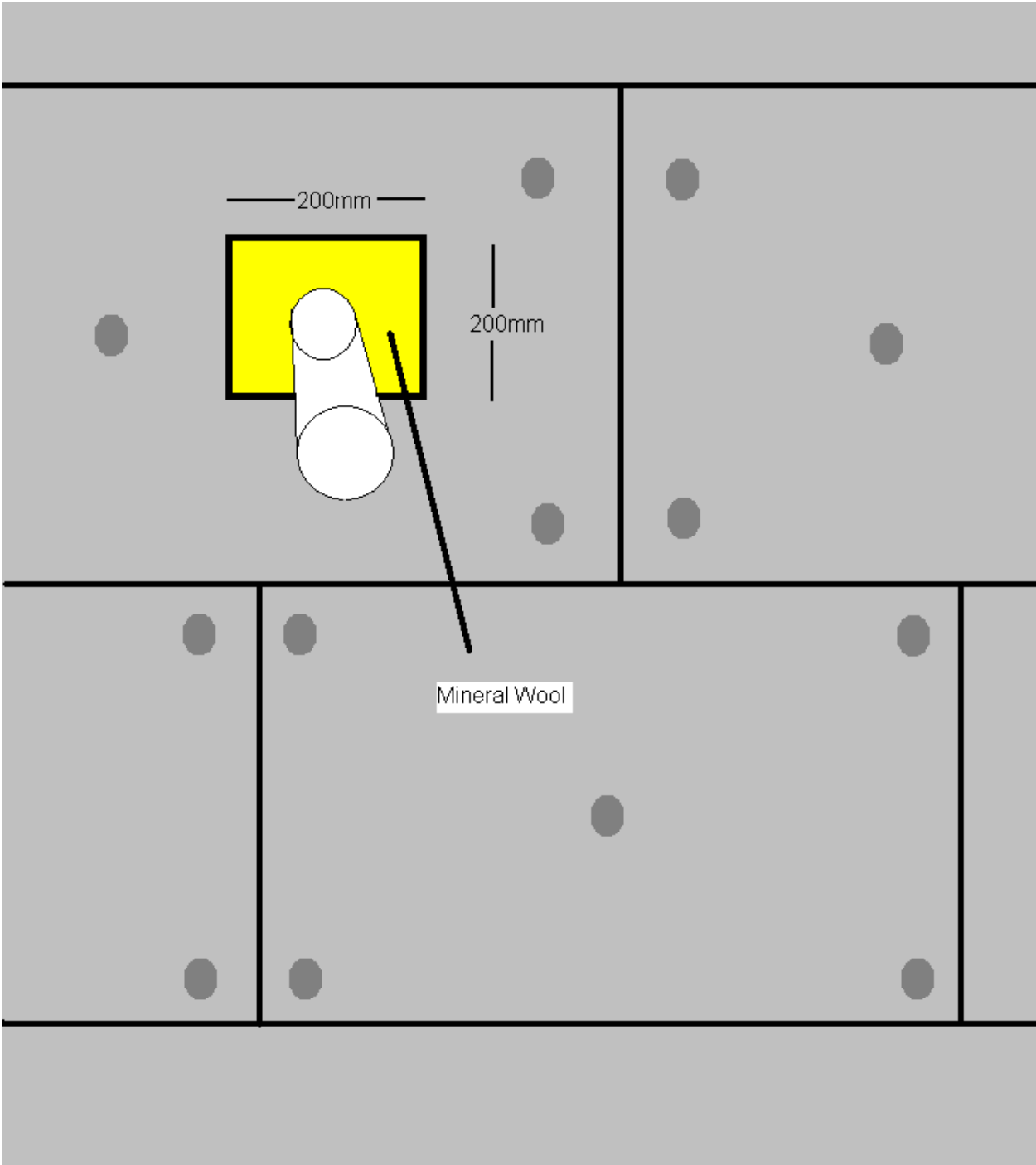
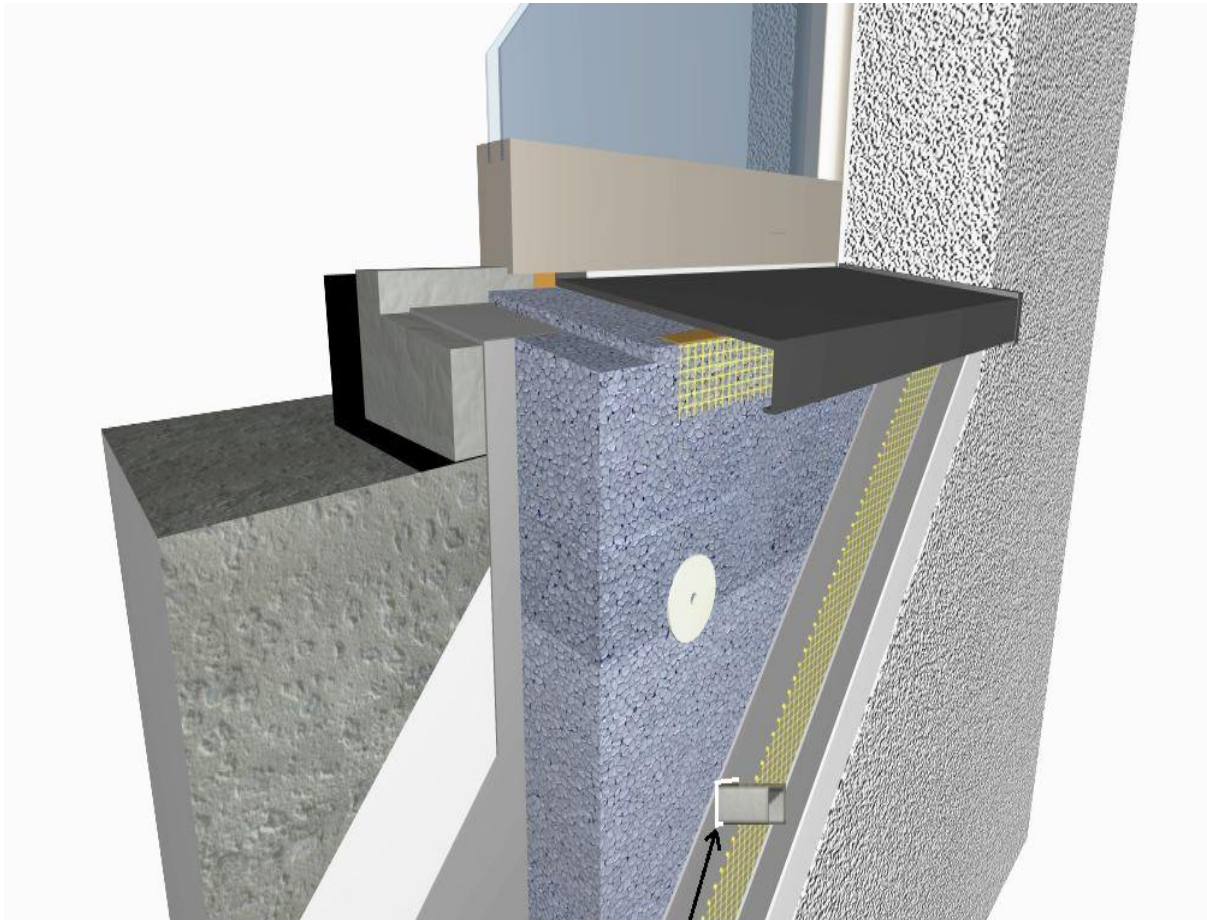


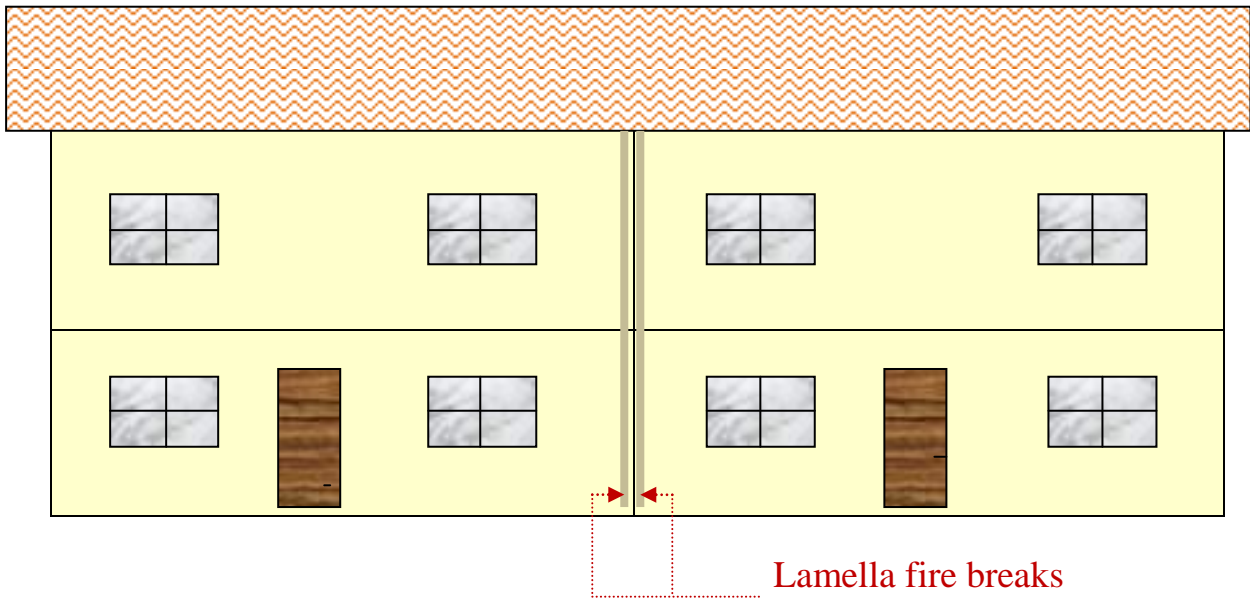
Figure 20 flexible joints



Use polymer sealant around flexible joint such as pipes, on top of basecoat

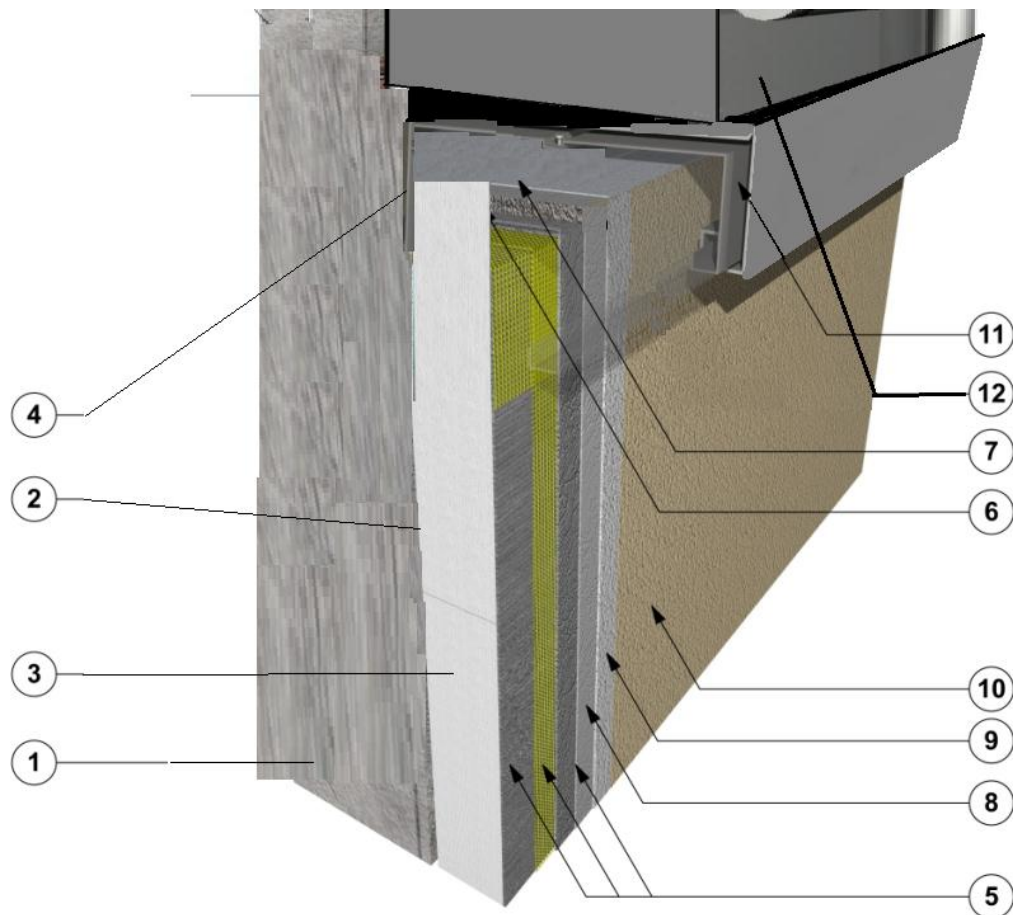
STD-021-0
Fire Break

Figure 21 Vertical fire break layout for semi-detached or mid-terraced house up to 2.5 storey house
(horizontal fire break required between floors if greater than 2.5 storeys
beginning between 2nd and 3rd storeys)



STD-022-0
Flashing

Figure 22 Flashing used where eave space not sufficient for insulation.



1. Substrate
2. Insulation adhesive
 - ATLAS STOPTER K-10/AVAL KT 83
 - ATLAS STOPTER K-20/AVAL KT 85
 - ATLAS HOTER S/AVAL KT 53
 - ATLAS HOTER U/AVAL KT 55
3. Thermal insulation
 - standard expanded polystyrene EPS
 - elastified expanded polystyrene EPS
4. Flashing bolted to wall
5. Reinforced layer
 - adhesive ATLAS STOPTER K-20/AVAL KT 85
- Insulation adhesive ATLAS HOTER U/AVAL KT 55
- Glass fibre reinforcing mesh
6. Thermal Insulation
7. Foam/polymer sealant
8. Render primer
 - ATLAS CERPLAST/AVAL KT 16 (with mineral render ATLAS CERMIT/AVAL KT 35/AVAL KT 137 and acrylic render ATLAS CERMIT/AVAL KT 60/AVAL KT 64)
 - ATLAS SILKAT ASX/AVAL KT 15 (with silicate render ATLAS SILKAT/AVAL KT 72/AVAL KT 73)

- ATLAS SILKON ANX/AVAL KT 76 (with silicone render ATLAS SILKON/AVAL KT 74/AVAL KT 75)
- 9. Render coat
 - Mineral render ATLAS CERMIT/AVAL KT 35/AVAL KT 137
 - Acrylic render ATLAS CERMIT/AVAL KT 60/AVAL KT 64
 - Silicate render ATLAS SILKAT/AVAL KT 72/AVAL KT 73
 - Silicone render ATLAS SILKON/AVAL KT 74/AVAL KT 75
- 10. Top paint coat (optional)
 - Acrylic paint ATLAS ARKOL E/AVAL KT 44
 - Silicate paint ATLAS ARKOL S/AVAL KT 54 (with primer ATLAS ARKOL SX/AVAL KT 52)
 - Silicone paint ATLAS ARKOL N/AVAL KT 48 and ATLAS FASTEL/AVAL KT 46 (with primer ATLAS ARKOL NX/AVAL KT 47)
 - Silicone paint ATLAS FASTEL-NOVA
- 11. Flashing
- 12. Roof overhang

Figure 23a Standard Detail 23a Low Building

STD-023a-0
Low Building

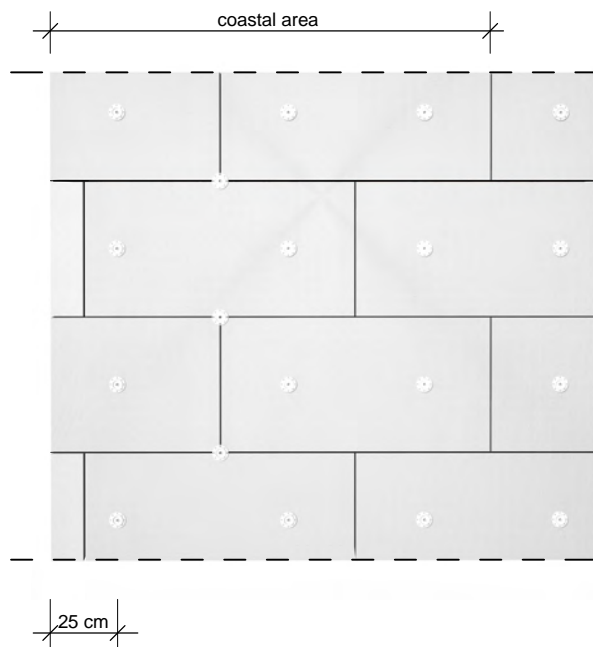
Thermal Insulation Composite Systems ATLAS/AVAL

An exemplary disposition diagram of the mechanical connectors

Calculation type:	single wall
Base:	cellular brick
Insulation type:	expanded polystyrene
Insulation thickness:	0,12 m
Plaster thickness:	0,00 m
Wall length:	10,00 m
Wall height:	12,00 m
Percentage of wall open (for example windows):	10 %
Connector type:	ø 10

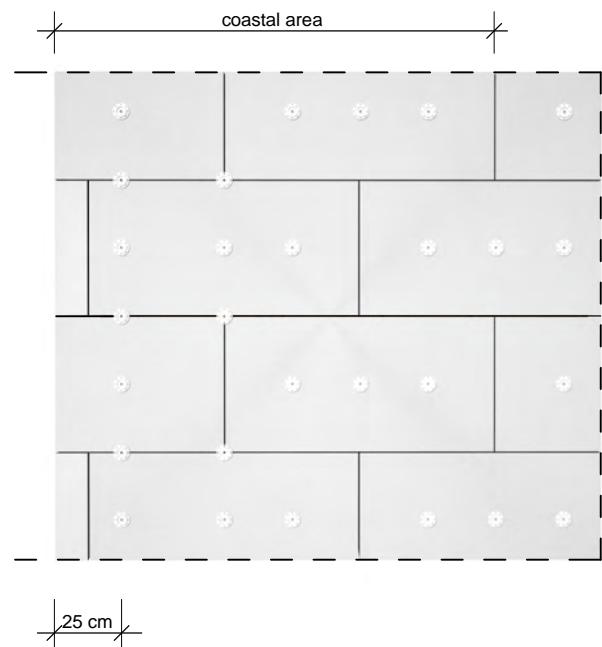
< 8 m

KI10-200N



8 - 20 m

KI10-200N



The disposition of the connectors represents only a demonstrative capacity. The designer of the insulation system is the person who shall every time indicate an amount and disposition of the connectors - if necessary, in consultation with the representative of manufacturer.

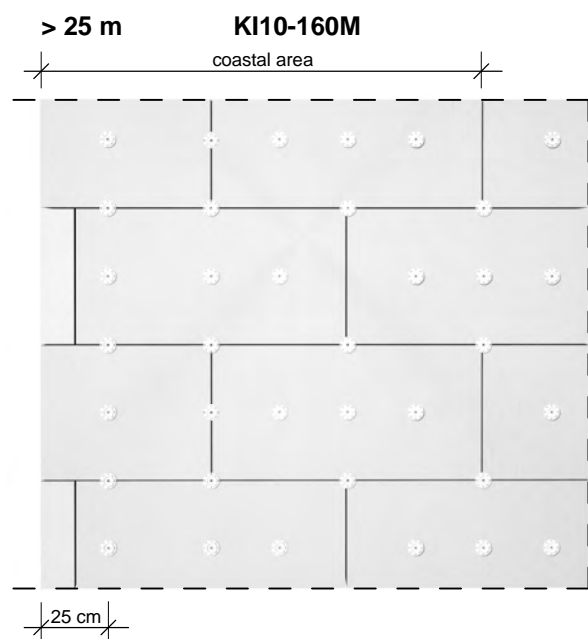
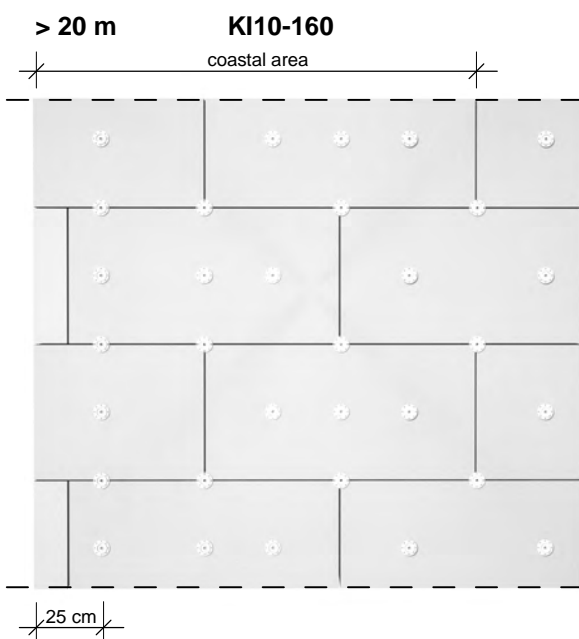
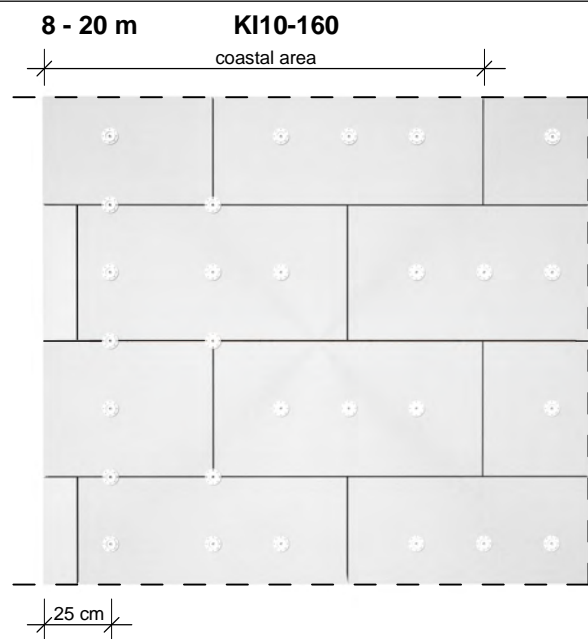
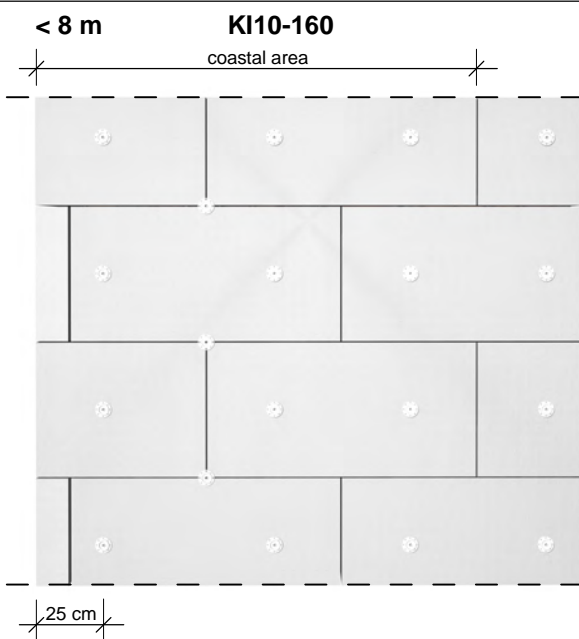
Figure 23b Standard Detail 23b High Building

Thermal Insulation Composite Systems ATLAS/AVAL

An exemplary disposition diagram of the mechanical connectors

STD-023b-0
High Building

Calculation type: single wall
Base: concrete
Insulation type: expanded polystyrene
Insulation thickness: 0,12 m
Plaster thickness: 0,00 m
Wall length: 50,00 m
Wall height: 30,00 m
Percentage of wall open (for example windows): 25 %
Connector type: \varnothing 10



The disposition of the connectors represents only a demonstrative capacity. The designer of the insulation system is the person who shall every time indicate an amount and disposition of the connectors - if necessary, in consultation with the representative of manufacturer.

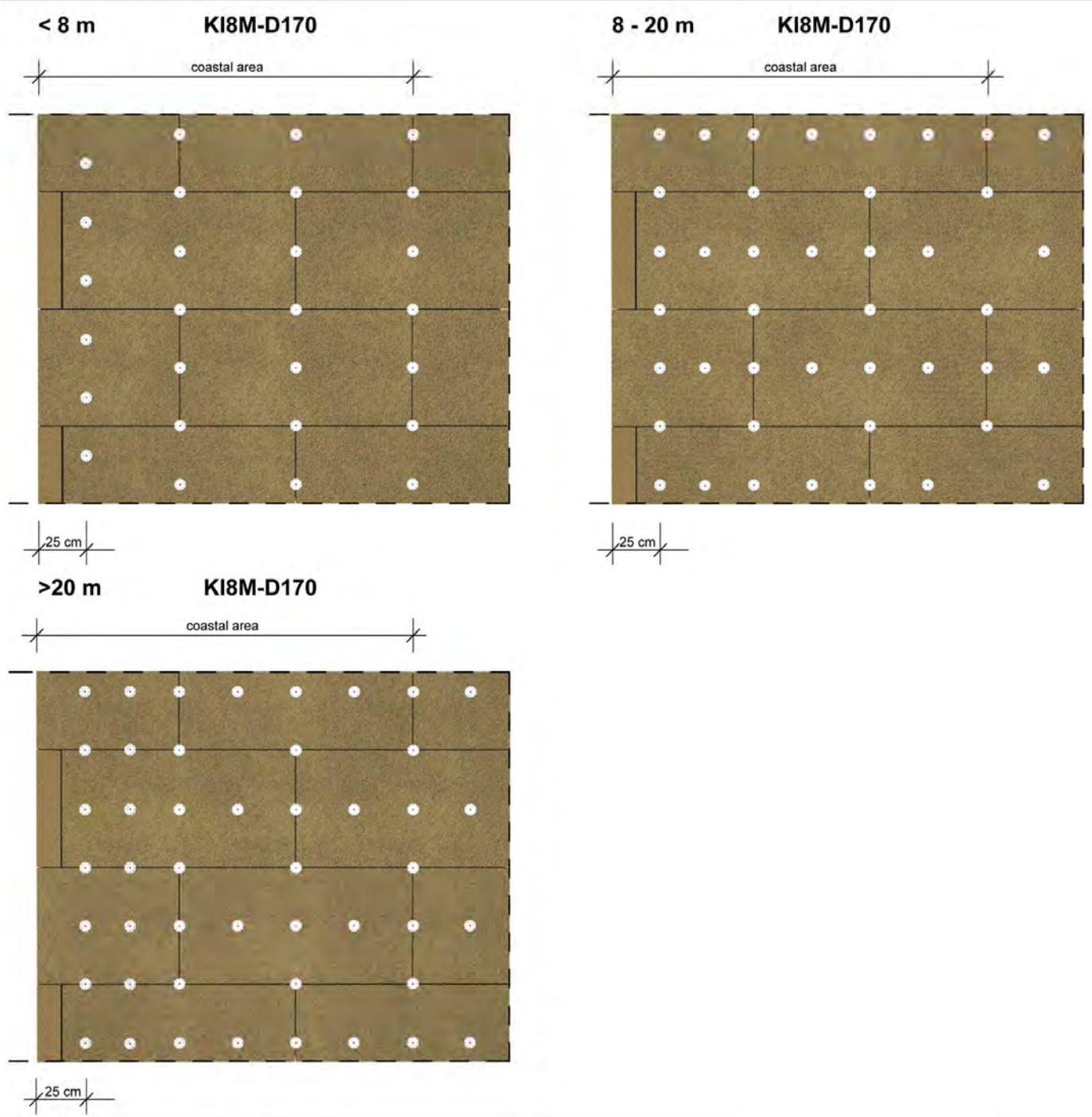
Figure 3. Standard Detail 23c Mineral Wool Thermal Insulation Composite Systems ATLAS/AVAL

STD-023c-0
Mineral Wool (MW)

Thermal Insulation Composite Systems ATLAS/AVAL

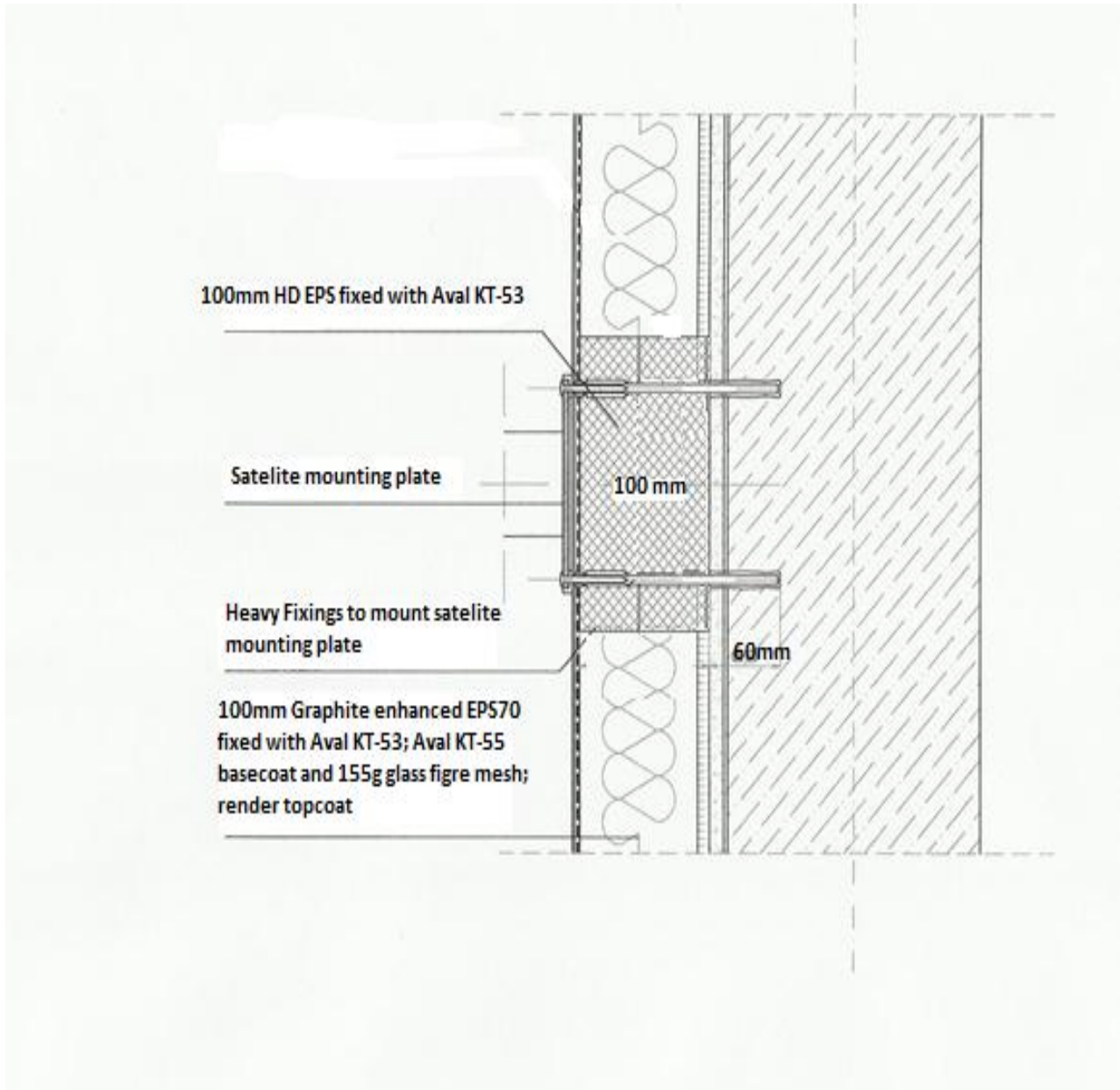
An exemplary disposition diagram of the mechanical connectors

Calculation type:	single wall
Base:	concrete
Insulation type:	mineral wool
Insulation thickness:	0,12 m
Plaster thickness:	0,00 m
Wall length:	50,00 m
Wall height:	30,00 m
Percentage of wall open (for example windows):	25 %
Connector type:	ø 8



The disposition of the connectors represents only a demonstrative capacity. The designer of the insulation system is the person who shall every time indicate an amount and disposition of the connectors - if necessary, in consultation with the representative of manufacturer.

Standard Detail 24 Satellite mounting



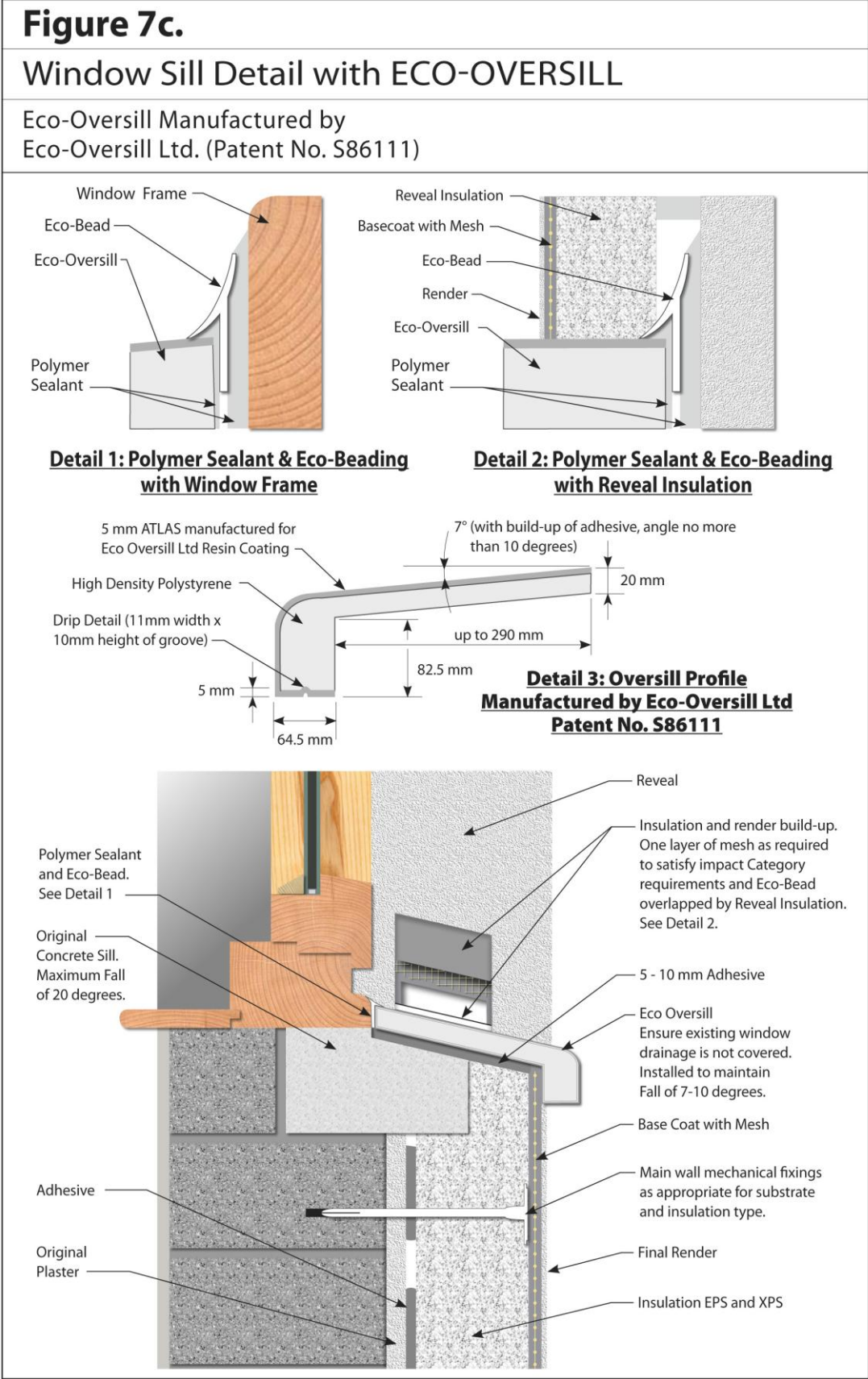


Figure 26

STD-026-0
Garden Wall

