



ATLAS  
BUILDING TOGETHER



# MANUAL

## **Rapid Response Overfloor Board EPS 300/400**

COMPLETE SOLUTION FOR UNDERFLOOR HEATING  
USING MILLED HARD STYROFOAM BOARDS

- easy to apply **self-levelling screed**
- under ceramic tiles, panels, PVC and carpet flooring
- thin layer solution – **only 5 mm of screed** for tiles
- foot traffic on the subfloor and ceramic tiles
- cladding just **after 24 hours**



# 1 SUBSTRATE PREPARATION

The substrate for the polystyrene Rapid Response Overfloor Boards should be stable, load-bearing, even, free from loose elements and free from dust. Irregularities on the entire surface should not exceed 4 mm. Local losses of up to 10 mm are allowed and should be filled with ATLAS GRAWIS U or ATLAS HOTER U (adhesives).



Example of rapid response overfloor board

# 2 PRIMING

Appropriate adhesion must be ensured: in the case of absorbent substrates, their water absorption should be limited by using suitable ATLAS primer.

## **Cementitious floors**

For typical concrete substrates, ATLAS UNI-GRUNT or ATLAS UNI-GRUNT ULTRA is used.

## **OSB, Terrazzo, Varnished Boards**

Stable floors made of varnished boards, OSB or terrazzo floors should be primed with ATLAS ULTRAGRUNT. First, they must be cleaned, dedusted and degreased.

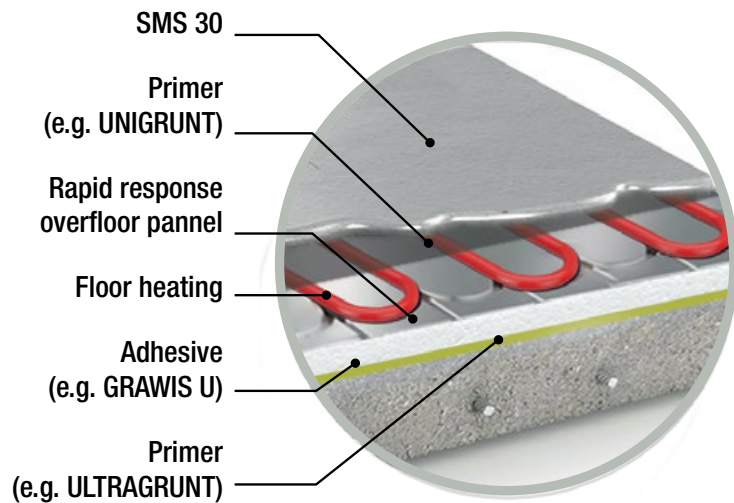
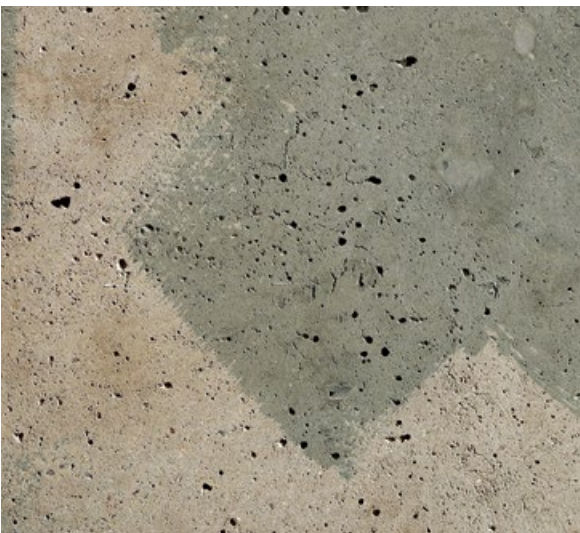
Further work can be carried out after the coating has dried, after 2-4 hours (in the case of ATLAS ULTRAGRUNT applied on terrazzo – after 24 hours).

# 3 BONDING OF RAPID RESPONSE BOARDS WITH ATLAS GRAWIS U OR ATLAS HOTER U

Spread the adhesive evenly over the entire surface of the backside of the milled slab using a notched trowel. The thickness of the adhesive layer should not exceed 5 mm after bonding - which is ensured by using a trowel with 8-10 mm teeth. Place the slabs closely one next to the other, pressing them evenly to the substrate using a trowel of at least 60 cm or a short construction patch so as not to apply the load pointwise. Although it is possible to step on the slabs bonded on after 24 hours, it is not recommended to install the heating system earlier than 3 days after fixing them.

ATLAS  
GRAWIS U  
& HOTER U  
ADHESIVES





## 1 PRIMING

After laying the heating installation and verifying its tightness, the stably mounted polystyrene Rapid Response Overfloor Boards should be primed. For this purpose, ATLAS ULTRAGRUNT should be applied to the surface of the aluminum sheet covering it and left to dry for at least 4 hours.

## 2 SLC APPLICATION

Apply ATLAS SMS 30 on the primed surface. The screed should be applied following the guidelines included in the technical data sheet of the product. The same applies to the care conditions.

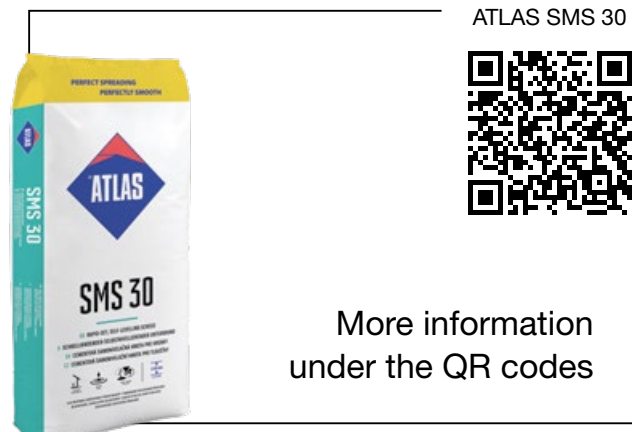
### Ceramic tiles

The minimum thickness of SLC is 5 mm.

### PVC panels, wooden floors, carpets, etc.

The minimum thickness of SLC is 10 mm.

Stepping onto the screed is permitted 24 hours after its completion.







# 1 SCREED PRE-HEATING

Pre-heating of the screed can be started 14 days after its application. Carry out this process by increasing the temperature by a maximum of 10 °C per day, starting from the ambient temperature, until the operating temperature of the installation is reached. Maintain the maximum temperature for 2 days. Then lower the temperature in the installation to room temperature by a maximum of 10 °C per day.

# 2 FINAL COVERING INSTALLATION

## Ceramic Tiles

You can start mounting the tiles only after the screed pre-heating process is completed. Self-leveling screed has to be primed with ATLAS UNI-GRUNT or ATLAS UNI-GRUNT ULTRA. A wide range of ATLAS adhesives for ceramic tiles are available. The appropriate adhesive suitable for use with underfloor heating should be selected taking into account the parameters of the tiles.

The substrate temperature cannot exceed 25 °C or 35 °C, respectively, depending on the ATLAS adhesive used. The heating system can be fully started and operationally used respectively 7, 14, 21 days after laying the tiles – also depending on the ATLAS adhesive used.

## Waterproofing

In “wet” rooms (bathrooms) or requiring waterproofing (laundries, kitchens, etc.), it is needed to use waterproofing under ceramic tiles. Recommended ATLAS products are ATLAS WODER DUO and ATLAS WODER E.

When selecting waterproofing, the expected conditions of use in the places of their application should be taken into account. Their parameters and guidelines for use can be found in the appropriate product data sheets. Waterproofing is performed after the substrate pre-heating is over and before laying ceramic tiles. It should be borne in mind that tiling can be continued after the time specified in the technical data sheets.

## Carpets and other coverings bonding

The screed made of ATLAS SMS 30 can be used under the most popular carpets/coverings – following the provisions of the product’s technical data sheet. You can start laying them as in the case of ceramic tiles – when the pre-heating process is over. The method and conditions of installation, the selection of adhesives and possibly primers should be based on the recommendations of the covering manufacturers.

ATLAS WATERPROOFING

