

**Calculation of the edge zone width**

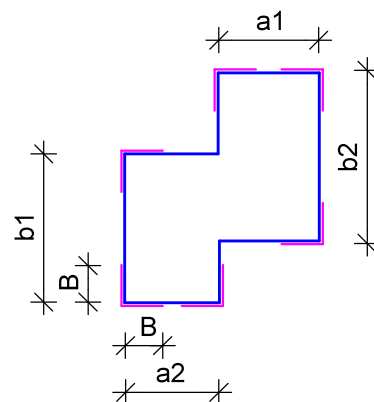
The width of the edge zone is equal to 1/8 of the length of the shortest external convex wall, but not less than 1.0m and not more than 2.0m, then:

$$B = \frac{1}{8} \min(a_1, a_2, b_1, b_2) \text{ and } 1.0 < B < 2.0 \text{ m}$$

t - lamella mineral wool board thickness

**Attention:**

The number of anchors depends on the wind load and should result from the specialist calculation carried out for every building.



**No. 1.2.3** EWI system made with lamella mineral wool panels insulation slabs layout and fasteners' fixing pattern - example